



Canne fumarie inox
Accessori per fumisteria

LISTINO PREZZI 2022



DOPPIA PARETE ISOLATA 25 mm
25 MM INSULATED DOUBLE-WALL

DOPPIA PARETE ISOLATA 25 mm



DOPPIA PARETE ISOLATA 25 mm

25 MM INSULATED *DOUBLE-WALL*

DESCRIZIONE / DESCRIPTION

Camino a doppia parete metallica isolato con lana di roccia di spessore 25mm , parete interna in acciaio 1.4404 (AISI 316 L) di spessore 0,5 mm; di 0,6 mm; di 0,8 mm; o di 1 mm e parete esterna in acciaio inox o rame.
Range diametri interni con parete esterna in acciaio 80 mm ÷ 900 mm.
Range diametri interni con parete esterna in rame 80 mm ÷ 500 mm.

*Double-wall metal chimney insulated with 25 mm thick rock wool, internal wall made of steel type 1.4404 (AISI 316 L), thickness: 0.5 mm, 0.6 mm, 0.8 mm or 1 mm, and external wall made of stainless steel or copper.
Internal diameter range with external wall made of steel: 80 mm ÷ 900 mm.
Internal diameter range with external wall made of copper: 80 mm ÷ 500 mm.*

APPLICAZIONI / APPLICATIONS

Evacuazione fumi umidi e secchi in pressione positiva e depressione, prodotti di ventilazione, vapori, gruppi elettrogeni.

Evacuation of wet and dry smoke under positive and negative pressure, ventilation products, fumes, generators.

DIAMETRI DI PRODUZIONE / DIAMETERS PRODUCED

INTERNO	80	100	130	150	180	200	250	300	350	400
ESTERNO	130	150	180	200	230	250	300	350	400	450
INTERNO	450	500	550	600	650	700	750	800	850	900
ESTERNO	500	550	600	650	700	750	800	850	900	950

CERTIFICAZION / CERTIFICATES

Certificato di Conformità del controllo dei processi produttivi in fabbrica.
Compliance certificate for factory production monitoring.



DOPPIA PARETE ISOLATA 25 mm

25 MM INSULATED DOUBLE-WALL

DESIGNAZIONE / DESIGNATION

CON GUARNIZIONE / WITH GASKET

Sistema di camino EN 1856-1 / Chimney system EN 1856-1 : T200 – P1 – W – V2 – L50050 – O(20)

DISTANZE DAI MATERIALI COMBUSTIBILI DEI SISTEMI DI CAMINO: DISTANCE TO COMBUSTIBLE MATERIALS OF CHIMNEY SYSTEMS:

Nel caso di "sistemi di camino" la distanza dei materiali combustibili riportata nella designazione si applica fino al diametro interno 300mm. Per sistemi aventi diametro interno superiore a 300mm si applicano i seguenti coefficienti correttivi:

- Per diametri interni tra 301 e 450mm moltiplicare la distanza x 1,5 (30)
- Per diametri interni tra 451 e 600mm moltiplicare la distanza x 2 (40)
- Per diametri interni superiori a 601mm moltiplicare la distanza x 4 (80)

In case of "chimney systems", the distance to combustible materials indicated in the designation applies up to an internal diameter of 300 mm. For systems with an internal diameter above 300 mm, the following adjustment coefficients apply:

- For internal diameters between 301 and 450 mm, multiply distance by 1.5 (75)*
- For internal diameters between 451 and 600 mm, multiply distance by 2 (100)*
- For internal diameters above 601 mm, multiply distance by 4 (200)*

SENZA GUARNIZIONE/WITHOUT GASKET :

Sistema di camino EN 1856-1 / Chimney system EN 1856-1 : T600 – N1 – D – V2 – L50050 – G(70)

DISTANZE DAI MATERIALI COMBUSTIBILI DEI SISTEMI DI CAMINO: DISTANCE TO COMBUSTIBLE MATERIALS OF CHIMNEY SYSTEMS:

Nel caso di "sistemi di camino" la distanza dei materiali combustibili riportata nella designazione si applica fino al diametro interno 300mm. Per sistemi aventi diametro interno superiore a 300mm si applicano i seguenti coefficienti correttivi:

- Per diametri interni tra 301 e 450mm moltiplicare la distanza x 1,5 (105)
- Per diametri interni tra 451 e 600mm moltiplicare la distanza x 2 (140)
- Per diametri interni superiori a 601mm moltiplicare la distanza x 4 (280)

In case of "chimney systems", the distance to combustible materials indicated in the designation applies up to an internal diameter of 300 mm. For systems with an internal diameter above 300 mm, the following adjustment coefficients apply:

- For internal diameters between 301 and 450 mm, multiply distance by 1.5 (105)*
- For internal diameters between 451 and 600 mm, multiply distance by 2 (140)*
- For internal diameters above 601 mm, multiply distance by 4 (280)*

EN 1856-1/09	: Normativa di riferimento : Reference standard
T200	: Classe di temperatura (200°C) : Temperature class
P1	: Classe di pressione (200Pa) : Pressure class
W	: Resistenza alla condensa (W : umido - D : secco) : Condensate resistance (W : wet - D : dry)
V2	: Resistenza alla corrosione (Si) : Corrosion resistance
L50	: Specifica del materiale utilizzato (A316L) : Material specification
050	: Spessore del materiale (5/10) : Material thickness
O	: Resistenza al fuoco di fuliggine (G=si - O=no) : Sootfire resistance
(20)	: Distanza dal materiale combustibile (in mm) : Distance to combustible material (in mm)

EN 1856-1/09	: Normativa di riferimento : Reference standard
T600	: Classe di temperatura (600°C) : Temperature class
N1	: Classe di pressione (40Pa) : Pressure class
D	: Resistenza alla condensa (W : umido - D : secco) : Condensate resistance (W : wet - D : dry)
V2	: Resistenza alla corrosione (Si) : Corrosion resistance
L50	: Specifica del materiale utilizzato (A316L) : Material specification
050	: Spessore del materiale (5/10) : Material thickness
G	: Resistenza al fuoco di fuliggine (G=si - O=no) : Sootfire resistance
(70)	: Distanza dal materiale combustibile (in mm) : Distance to combustible material (in mm)

DOPPIA PARETE ISOLATA 25 mm

25 MM INSULATED *DOUBLE-WALL*



ELEMENTO LINEARE H=1000 ACCIAIO

LINEAR ELEMENT H=1000 STEEL

CODICE	Ø	€
DPL100080	80/130	109,44
DPL100100	100/150	120,38
DPL100130	130/180	142,27
DPL100150	150/200	164,16
DPL100180	180/230	180,58
DPL100200	200/250	191,52
DPL100250	250/300	229,82
DPL100300	300/350	273,60
DPL100350	350/400	389,88
DPL100400	400/450	430,92
DPL100450	450/500	485,64
DPL100500	500/550	540,36



ELEMENTO LINEARE H=750 ACCIAIO

LINEAR ELEMENT H=750 STEEL

CODICE	Ø	€
DPL075080	80/130	71,14
DPL075100	100/150	82,08
DPL075130	130/180	90,29
DPL075150	150/200	101,23
DPL075180	180/230	109,44
DPL075200	200/250	117,65
DPL075250	250/300	136,80
DPL075300	300/350	164,16
DPL075350	350/400	225,72
DPL075400	400/450	246,24
DPL075450	450/500	266,76
DPL075500	500/550	287,28



ELEMENTO LINEARE H=1000 RAME

LINEAR ELEMENT H=1000 COPPER

CODICE	Ø	€
DRL100080	80/130	155,61
DRL100100	100/150	170,43
DRL100130	130/180	200,07
DRL100150	150/200	229,71
DRL100180	180/230	259,35
DRL100200	200/250	274,17
DRL100250	250/300	326,04
DRL100300	300/350	385,32
DRL100350	350/400	526,11
DRL100400	400/450	585,39
DRL100450	450/500	659,49
DRL100500	500/550	733,59



ELEMENTO LINEARE H=750 RAME

LINEAR ELEMENT H=750 COPPER

CODICE	Ø	€
DRL075080	80/130	118,56
DRL075100	100/150	140,79
DRL075130	130/180	170,43
DRL075150	150/200	177,84
DRL075180	180/230	214,89
DRL075200	200/250	229,71
DRL075250	250/300	266,76
DRL075300	300/350	318,63
DRL075350	350/400	466,83
DRL075400	400/450	511,29
DRL075450	450/500	555,75
DRL075500	500/550	592,80

DOPPIA PARETE ISOLATA 25 mm

25 MM INSULATED *DOUBLE-WALL*

ELEMENTO LINEARE H=500 ACCIAIO

LINEAR ELEMENT H=500 STEEL



CODICE	Ø	€
DPL050080	80/130	71,14
DPL050100	100/150	82,08
DPL050130	130/180	90,29
DPL050150	150/200	101,23
DPL050180	180/230	109,44
DPL050200	200/250	117,65
DPL050250	250/300	136,80
DPL050300	300/350	164,16
DPL050350	350/400	225,72
DPL050400	400/450	246,24
DPL050450	450/500	266,76
DPL050500	500/550	287,28

ELEMENTO LINEARE H=333 ACCIAIO

LINEAR ELEMENT H=333 STEEL



CODICE	Ø	€
DPL033080	80/130	60,19
DPL033100	100/150	65,66
DPL033130	130/180	71,14
DPL033150	150/200	76,61
DPL033180	180/230	84,82
DPL033200	200/250	87,55
DPL033250	250/300	109,44
DPL033300	300/350	125,86
DPL033350	350/400	171,00
DPL033400	400/450	191,52
DPL033450	450/500	232,56
DPL033500	500/550	253,08

ELEMENTO LINEARE H=500 RAME

LINEAR ELEMENT H=500 COPPER



CODICE	Ø	€
DRL050080	80/130	100,78
DRL050100	100/150	115,60
DRL050130	130/180	127,45
DRL050150	150/200	142,27
DRL050180	180/230	157,09
DRL050200	200/250	168,95
DRL050250	250/300	194,14
DRL050300	300/350	231,19
DRL050350	350/400	311,22
DRL050400	400/450	333,45
DRL050450	450/500	363,09
DRL050500	500/550	392,73

ELEMENTO LINEARE H=333 RAME

LINEAR ELEMENT H=333 COPPER



CODICE	Ø	€
DRL033080	80/130	85,96
DRL033100	100/150	93,37
DRL033130	130/180	100,78
DRL033150	150/200	108,19
DRL033180	180/230	124,49
DRL033200	200/250	127,45
DRL033250	250/300	157,09
DRL033300	300/350	179,32
DRL033350	350/400	237,12
DRL033400	400/450	259,35
DRL033450	450/500	318,63
DRL033500	500/550	348,27

DOPPIA PARETE ISOLATA 25 mm

25 MM INSULATED *DOUBLE-WALL*



ELEMENTO LINEARE H=250 ACCIAIO

LINEAR ELEMENT H=250 STEEL

CODICE	Ø	€
DPL025080	80/130	49,25
DPL025100	100/150	54,72
DPL025130	130/180	60,19
DPL025150	150/200	65,66
DPL025180	180/230	71,14
DPL025200	200/250	73,87
DPL025250	250/300	90,29
DPL025300	300/350	103,97
DPL025350	350/400	150,48
DPL025400	400/450	164,16
DPL025450	450/500	205,20
DPL025500	500/550	218,88



> NEW

ELEMENTO LINEARE H=2000 ACCIAIO

LINEAR ELEMENT H=2000 STEEL

CODICE	Ø	€
DPL200080	80/130	245,00
DPL200100	100/150	270,00



ELEMENTO LINEARE H=250 RAME

LINEAR ELEMENT H=250 COPPER

CODICE	Ø	€
DRL025080	80/130	71,14
DRL025100	100/150	78,55
DRL025130	130/180	85,96
DRL025150	150/200	93,37
DRL025180	180/230	105,22
DRL025200	200/250	109,67
DRL025250	250/300	131,90
DRL025300	300/350	149,68
DRL025350	350/400	207,48
DRL025400	400/450	222,30
DRL025450	450/500	274,17
DRL025500	500/550	296,40

DOPPIA PARETE ISOLATA 25 mm

25 MM INSULATED *DOUBLE-WALL*

> NEW



ELEMENTO PER TAGLIO
DOPPIA PARETE ACCIAIO*
*DOUBLE-WALL ELEMENT FOR CUTTING, STEEL**

CODICE	Ø	€
MPTELE130	80/130	27,36
MPTELE140	100/150	30,23
MPTELE150	130/180	31,60
MPTELE160	150/200	33,11
MPTELE180	180/230	35,98
MPTELE200	200/250	38,85
MPTELE220	250/300	43,09
MPTELE250	300/350	47,47

* Altri diametri a richiesta
* Other diameters upon request



ELEMENTO LINEARE H=250 CON SERRANDA
LINEAR ELEMENT H = 250 WITH DAMPER

CODICE	Ø	€
DPL025SER080	80/130	169,63
DPL025SER100	100/150	175,10
DPL025SER130	130/180	183,31
DPL025SER150	150/200	188,78
DPL025SER180	180/230	202,46
DPL025SER200	200/250	205,20
DPL025SER250	250/300	224,35
DPL025SER300	300/350	240,77

ELEMENTO PER TAGLIO
DOPPIA PARETE RAME*
*DOUBLE-WALL ELEMENT FOR CUTTING, COPPER**



CODICE	Ø	€
MRTAG130	80/130	49,80
MRTAG150	100/150	54,54
MRTAG180	130/180	66,99
MRTAG200	150/200	79,44
MRTAG230	180/230	79,44
MRTAG250	200/250	148,20
MRTAG300	250/300	177,84
MRTAG350	300/350	121,52

* Altri diametri a richiesta
* Other diameters upon request

DOPPIA PARETE ISOLATA 25 mm

25 MM INSULATED *DOUBLE-WALL*

ELEMENTO TELESCOPICO 270/390 ACCIAIO

TELESCOPIC ELEMENT 270/390 STEEL



CODICE	Ø	€
DPTELE080	80/130	109,44
DPTELE100	100/150	114,91
DPTELE130	130/180	125,86
DPTELE150	150/200	131,33
DPTELE180	180/230	142,27
DPTELE200	200/250	153,22
DPTELE250	250/300	169,63
DPTELE300	300/350	202,46
DPTELE350	350/400	266,76
DPTELE400	400/450	294,12
DPTELE450	450/500	169,63
DPTELE500	500/550	180,58

ELEMENTO TELESCOPICO 340/550 ACCIAIO

TELESCOPIC ELEMENT 340/550 STEEL



CODICE	Ø	€
DP5TELE080	80/130	202,46
DP5TELE100	100/150	218,88
DP5TELE130	130/180	224,35
DP5TELE150	150/200	246,24
DP5TELE180	180/230	290,02
DP5TELE200	200/250	383,04
DP5TELE250	250/300	417,24
DP5TELE300	300/350	451,44
DP5TELE350	350/400	485,64
DP5TELE400	400/450	207,94
DP5TELE450	450/500	218,88
DP5TELE500	500/550	246,24

ELEMENTO TELESCOPICO 270/390 RAME

TELESCOPIC ELEMENT 270/390 COPPER



CODICE	Ø	€
DRTELE080	80/130	148,20
DRTELE100	100/150	155,61
DRTELE130	130/180	170,43
DRTELE150	150/200	177,84
DRTELE180	180/230	192,66
DRTELE200	200/250	207,48
DRTELE250	250/300	229,71
DRTELE300	300/350	274,17
DRTELE350	350/400	363,09
DRTELE400	400/450	400,14
DRTELE450	450/500	429,78
DRTELE500	500/550	459,42

ELEMENTO TELESCOPICO 340/550 RAME

TELESCOPIC ELEMENT 340/550 COPPER



CODICE	Ø	€
DR5TELE080	80/130	229,71
DR5TELE100	100/150	244,53
DR5TELE130	130/180	259,35
DR5TELE150	150/200	274,17
DR5TELE180	180/230	296,40
DR5TELE200	200/250	303,81
DR5TELE250	250/300	333,45
DR5TELE300	300/350	392,73
DR5TELE350	350/400	518,70
DR5TELE400	400/450	570,57
DR5TELE450	450/500	615,03
DR5TELE500	500/550	659,49

DOPPIA PARETE ISOLATA 25 mm

25 MM INSULATED *DOUBLE-WALL*

ELEMENTO TELESCOPICO 550/880 ACCIAIO

TELESCOPIC ELEMENT 550/880 STEEL



CODICE	Ø	€
DP8TELE080	80/130	257,18
DP8TELE100	100/150	273,60
DP8TELE130	130/180	290,02
DP8TELE150	150/200	328,32
DP8TELE180	180/230	388,51
DP8TELE200	200/250	615,60
DP8TELE250	250/300	656,64
DP8TELE300	300/350	998,64
DP8TELE350	350/400	998,64
DP8TELE400	400/450	998,64
DP8TELE450	450/500	998,64
DP8TELE500	500/550	998,64

RACCORDO "BRAGA" 135 ACCIAIO

135° TEE PIECE, STEEL



CODICE	Ø	€
DPT135080	80/130	317,38
DPT135100	100/150	350,21
DPT135130	130/180	383,04
DPT135150	150/200	404,93
DPT135180	180/230	448,70
DPT135200	200/250	547,20
DPT135250	250/300	651,17
DPT135300	300/350	760,61
DPT135350	350/400	1026,00
DPT135400	400/450	1135,44
DPT135450	450/500	1477,44
DPT135500	500/550	1819,44

ELEMENTO TELESCOPICO 550/880 RAME

TELESCOPIC ELEMENT 550/880 COPPER



CODICE	Ø	€
DR8TELE080	80/130	281,58
DR8TELE100	100/150	296,40
DR8TELE130	130/180	333,45
DR8TELE150	150/200	348,27
DR8TELE180	180/230	370,50
DR8TELE200	200/250	392,73
DR8TELE250	250/300	444,60
DP8TELE300	300/350	526,11
DP8TELE350	350/400	703,95
DP8TELE400	400/450	778,05
DP8TELE450	450/500	837,33
DP8TELE500	500/550	889,20

RACCORDO "BRAGA" 135 RAME

135° TEE PIECE, COPPER



CODICE	Ø	€
DRT135080	80/130	429,78
DRT135100	100/150	474,24
DRT135130	130/180	518,70
DRT135150	150/200	548,34
DRT135180	180/230	607,62
DRT135200	200/250	741,00
DRT135250	250/300	881,79
DRT135300	300/350	1029,99
DRT135350	350/400	1393,08
DRT135400	400/450	1541,28
DRT135450	450/500	2000,70
DRT135500	500/550	2474,94

DOPPIA PARETE ISOLATA 25 mm

25 MM INSULATED *DOUBLE-WALL*

MODULO PRELIEVO FUMI + TERMOMETRO ACCIAIO

SMOKE SAMPLING MODULE + THERMOMETER, STEEL



CODICE	Ø	€
DPTMP080	80/130	191,52
DPTMP100	100/150	198,36
DPTMP130	130/180	205,20
DPTMP150	150/200	218,88
DPTMP180	180/230	229,82
DPTMP200	200/250	235,30
DPTMP250	250/300	254,45
DPTMP300	300/350	281,81
DPTMP350	350/400	342,00
DPTMP400	400/450	362,52
DPTMP450	450/500	383,04
DPTMP500	500/550	403,56

MODULO SOLO PRELIEVO FUMI ACCIAIO

SMOKE SAMPLING MODULE, STEEL



CODICE	Ø	€
DPFUMI080	80/130	109,44
DPFUMI100	100/150	123,12
DPFUMI130	130/180	134,06
DPFUMI150	150/200	145,01
DPFUMI180	180/230	161,42
DPFUMI200	200/250	166,90
DPFUMI250	250/300	191,52
DPFUMI300	300/350	235,30
DPFUMI350	350/400	273,60
DPFUMI400	400/450	300,96
DPFUMI450	450/500	342,00
DPFUMI500	500/550	355,68

MODULO PRELIEVO FUMI + TERMOMETRO RAME

SMOKE SAMPLING MODULE+ THERMOMETER, COPPER



CODICE	Ø	€
DRTEMP080	80/130	259,35
DRTEMP100	100/150	274,17
DRTEMP130	130/180	281,58
DRTEMP150	150/200	296,40
DRTEMP180	180/230	311,22
DRTEMP200	200/250	318,63
DRTEMP250	250/300	348,27
DRTEMP300	300/350	385,32
DRTEMP350	350/400	466,83
DRTEMP400	400/450	489,06
DRTEMP450	450/500	518,70
DRTEMP500	500/550	548,34

MODULO SOLO PRELIEVO FUMI RAME

SMOKE SAMPLING MODULE, COPPER



CODICE	Ø	€
DRFUMI080	80/130	148,20
DRFUMI100	100/150	170,43
DRFUMI130	130/180	185,25
DRFUMI150	150/200	200,07
DRFUMI180	180/230	222,30
DRFUMI200	200/250	229,71
DRFUMI250	250/300	259,35
DRFUMI300	300/350	318,63
DRFUMI350	350/400	370,50
DRFUMI400	400/450	407,55
DRFUMI450	450/500	466,83
DRFUMI500	500/550	489,06

DOPPIA PARETE ISOLATA 25 mm

25 MM INSULATED *DOUBLE-WALL*

> NEW

MODULO PRELIEVO FUMI 3" H=325
(TAPPO E NIPPLE INOX A316)
*SMOKE SAMPLING MODULE 3" H=325
(STAINLESS STEEL A316)*

CODICE	Ø	€
DP3FUMI080	80/130	248,98
DP3FUMI100	100/150	257,18
DP3FUMI130	130/180	276,34
DP3FUMI150	150/200	287,28
DP3FUMI180	180/230	303,70
DP3FUMI200	200/250	333,79
DP3FUMI250	250/300	358,42
DP3FUMI300	300/350	399,46
DP3FUMI350	350/400	471,96
DP3FUMI400	400/450	540,36
DP3FUMI450	450/500	629,28
DP3FUMI500	500/550	807,12



> NEW

KIT PER PRELIEVO DEI FUMI*
*KIT FOR FUMES COLLECTION**

CODICE	Ø	€
KITFUMI25	-	64,30
KITFUMI50	-	73,87



*In fase di ordine specificare il diametro del camino
* When ordering specify the diameter of the chimney

> NEW

MODULO PRELIEVO FUMI 4" H=325
SMOKE SAMPLING MODULE 4" H=325

CODICE	Ø	€
DP4FUMI080	80/130	287,28
DP4FUMI100	100/150	294,12
DP4FUMI130	130/180	318,74
DP4FUMI150	150/200	335,16
DP4FUMI180	180/230	355,68
DP4FUMI200	200/250	393,98
DP4FUMI250	250/300	424,08
DP4FUMI300	300/350	478,80
DP4FUMI350	350/400	574,56
DP4FUMI400	400/450	663,48
DP4FUMI450	450/500	777,02
DP4FUMI500	500/550	1012,32



> NEW

KIT PER RILEVAMENTO
TEMPERATURA*
*DETECTION KIT TEMPERATURE**

CODICE	Ø	€
KITTEMP	-	57,46



*In fase di ordine specificare il diametro del camino
* When ordering specify the diameter of the chimney

DOPPIA PARETE ISOLATA 25 mm

25 MM INSULATED *DOUBLE-WALL*

RACCORDO "T" 90° CON STACCO DOPPIA PARETE ACCIAIO

90° TEE PIECE W/ *DOUBLE-WALL BRANCH, STEEL*



CODICE	Ø	€
DPT90D080	80/130	158,69
DPT90D100	100/150	169,63
DPT90D130	130/180	186,05
DPT90D150	150/200	202,46
DPT90D180	180/230	268,13
DPT90D200	200/250	290,02
DPT90D250	250/300	317,38
DPT90D300	300/350	372,10
DPT90D350	350/400	506,16
DPT90D400	400/450	622,44
DPT90D450	450/500	779,76
DPT90D500	500/550	991,80

RACCORDO "T" 90° CON STACCO MONOPARETE ACCIAIO

90° TEE PIECE W/ *SINGLE-WALL BRANCH, STEEL*



CODICE	Ø	€
DPT90M080	80/130	112,18
DPT90M100	100/150	120,38
DPT90M130	130/180	139,54
DPT90M150	150/200	150,48
DPT90M180	180/230	166,90
DPT90M200	200/250	229,82
DPT90M250	250/300	257,18
DPT90M300	300/350	306,43
DPT90M350	350/400	389,88
DPT90M400	400/450	465,12
DPT90M450	450/500	581,40
DPT90M500	500/550	786,60

RACCORDO "T" 90° CON STACCO DOPPIA PARETE RAME

90° TEE PIECE W/ *DOUBLE-WALL BRANCH, COPPER*



CODICE	Ø	€
DRT90D080	80/130	214,89
DRT90D100	100/150	229,71
DRT90D130	130/180	251,94
DRT90D150	150/200	274,17
DRT90D180	180/230	363,09
DRT90D200	200/250	392,73
DRT90D250	250/300	429,78
DRT90D300	300/350	503,88
DRT90D350	350/400	689,13
DRT90D400	400/450	844,74
DRT90D450	450/500	1059,63
DRT90D500	500/550	1393,08

RACCORDO "T" 90° CON STACCO MONOPARETE RAME

90° TEE PIECE W/ *SINGLE-WALL BRANCH, COPPER*



CODICE	Ø	€
DRT90M100	100/150	163,02
DRT90M130	130/180	192,66
DRT90M150	150/200	207,48
DRT90M180	180/230	229,71
DRT90M200	200/250	311,22
DRT90M250	250/300	348,27
DRT90M300	300/350	414,96
DRT90M350	350/400	533,52
DRT90M400	400/450	629,85
DRT90M450	450/500	785,46
DRT90M500	500/550	1067,04

DOPPIA PARETE ISOLATA 25 mm

25 MM INSULATED **DOUBLE-WALL**

RACCORDO "T" 90° CON STACCO RIDOTTO A 80 MP ACCIAIO

90° TEE PIECE W/ SW BRANCH REDUCED TO 80, STEEL



CODICE	Ø	€
DPT9RM080	80/130	112,18
DPT9RM100	100/150	120,38
DPT9RM130	130/180	139,54
DPT9RM150	150/200	150,48
DPT9RM180	180/230	166,90
DPT9RM200	200/250	196,99
DPT9RM250	250/300	221,62
DPT9RM300	300/350	262,66
DPT9RM350	350/400	335,16
DPT9RM400	400/450	403,56
DPT9RM450	450/500	492,48
DPT9RM500	500/550	670,32

> NEW

RACCORDO "T" 90° CON STACCO RIDOTTO A 80 MP FEMMINA ACCIAIO

90° TEE PIECE W/ SW BRANCH REDUCED
TO 80 FEMALE, STEEL



CODICE	Ø	€
DPT9RF080	80/130	112,18
DPT9RF100	100/150	120,38
DPT9RF130	130/180	139,54
DPT9RF150	150/200	150,48
DPT9RF180	180/230	166,90
DPT9RF200	200/250	196,99
* DPT9RF250	250/300	221,62
* DPT9RF300	300/350	262,66

* Su richiesta
* Upon request

RACCORDO "T" 90° CON STACCO RIDOTTO A 80 MP RAME

90° TEE PIECE W/ SW BRANCH REDUCED TO 80, COPPER



CODICE	Ø	€
DRT9RM080	80/130	155,61
DRT9RM100	100/150	163,02
DRT9RM130	130/180	192,66
DRT9RM150	150/200	207,48
DRT9RM180	180/230	229,71
DRT9RM200	200/250	266,76
DRT9RM250	250/300	303,81
DRT9RM300	300/350	355,68
DRT9RM350	350/400	459,42
DRT9RM400	400/450	548,34
DRT9RM450	450/500	674,31
DRT9RM500	500/550	911,43

> NEW

RACCORDO "T" 90° CON STACCO RIDOTTO A 80 MP FEMMINA RAME

90° TEE PIECE W/ SW BRANCH REDUCED
TO 80 FEMALE, COPPER



CODICE	Ø	€
* DRT9RF080	80/130	155,61
* DRT9RF100	100/150	163,02
* DRT9RF130	130/180	192,66
* DRT9RF150	150/200	207,48
* DRT9RF180	180/230	229,71
* DRT9RF200	200/250	266,76
* DRT9RF250	250/300	303,81
* DRT9RF300	300/350	355,68

* Tutti diametri a richiesta
* Every diameters upon request

DOPPIA PARETE ISOLATA 25 mm

25 MM INSULATED *DOUBLE-WALL*



RACCORDO "T" 90° CON STACCO 80 DP
COASSIALE ACCIAIO

90° TEE PIECE W/ 80 DW COAXIAL BRANCH, STEEL

CODICE	Ø	€
DPT90C080	80/130	205,20
DPT90C100	100/150	220,25
DPT90C130	130/180	242,14
DPT90C150	150/200	262,66
DPT90C180	180/230	348,84
DPT90C200	200/250	377,57
DPT90C250	250/300	413,14
DPT90C300	300/350	484,27



RACCORDO "T" 93° CON STACCO
DOPPIA PARETE ACCIAIO

93° TEE PIECE W/ DOUBLE-WALL BRANCH, STEEL

CODICE	Ø	€
DPT93D080	80/130	158,69
DPT93D100	100/150	169,63
DPT93D130	130/180	186,05
DPT93D150	150/200	202,46
DPT93D180	180/230	268,13
DPT93D200	200/250	290,02
DPT93D250	250/300	317,38
DPT93D300	300/350	372,10



RACCORDO "T" 90° CON STACCO 80 DP
COASSIALE RAME

90° TEE PIECE W/ 80 DW COAXIAL BRANCH, COPPER

CODICE	Ø	€
DRT90C080	80/130	278,62
DRT90C100	100/150	299,36
DRT90C130	130/180	329,00
DRT90C150	150/200	355,68
DRT90C180	180/230	474,24
DRT90C200	200/250	511,29
DRT90C250	250/300	560,20
DRT90C300	300/350	658,01



RACCORDO "T" 93° CON STACCO
DOPPIA PARETE RAME

93° TEE PIECE W/ DOUBLE-WALL BRANCH, COPPER

CODICE	Ø	€
DRT93D080	80/130	214,89
DRT93D100	100/150	229,71
DRT93D130	130/180	251,94
DRT93D150	150/200	274,17
DRT93D180	180/230	363,09
DRT93D200	200/250	392,73
DRT93D250	250/300	429,78
DRT93D300	300/350	503,88

DOPPIA PARETE ISOLATA 25 mm

25 MM INSULATED **DOUBLE-WALL**



RACCORDO "T" 90° CON STACCO
RIDOTTO A 80 DP ACCIAIO

90° TEE PIECE W
DW BRANCH REDUCED TO 80, STEEL

CODICE	Ø	€
-	-	-
DPT9RD100	100/150	212,04
DPT9RD130	130/180	232,56
DPT9RD150	150/200	253,08
DPT9RD180	180/230	335,16
DPT9RD200	200/250	362,52
DPT9RD250	250/300	396,72
DPT9RD300	300/350	465,12



RACCORDO "T" 90° CON STACCO
RIDOTTO A 80/100 ISOL. 10mm ACCIAIO

90° TEE PIECE W
DW BRANCH REDUCED TO 80/100 INS. 10mm, STEEL

CODICE	Ø	€
DPT910080	80/130	205,20
DPT910100	100/150	212,04
DPT910130	130/180	232,56
DPT910150	150/200	253,08
DPT910180	180/230	335,16
DPT910200	200/250	362,52
DPT910250	250/300	396,72
DPT910300	300/350	465,12



RACCORDO "T" 90° CON STACCO
RIDOTTO A 80 DP RAME

90° TEE PIECE W
DW BRANCH REDUCED TO 80, COPPER

CODICE	Ø	€
-	-	-
DRT9RD100	100/150	287,51
DRT9RD130	130/180	315,67
DRT9RD150	150/200	343,82
DRT9RD180	180/230	454,97
DRT9RD200	200/250	492,02
DRT9RD250	250/300	537,97
DRT9RD300	300/350	629,85



RACCORDO "T" 90° CON STACCO
RIDOTTO A 80/100 ISOL. 10mm RAME

90° TEE PIECE W
DW BRANCH REDUCED TO 80/100 INS. 10mm, COPPER

CODICE	Ø	€
DRT910080	80/130	274,17
DRT910100	100/150	287,51
DRT910130	130/180	315,67
DRT910150	150/200	343,82
DRT910180	180/230	454,97
DRT910200	200/250	492,02
DRT910250	250/300	537,97
DRT910300	300/350	629,85

DOPPIA PARETE ISOLATA 25 mm

25 MM INSULATED *DOUBLE-WALL*

ELEMENTO ISPEZIONE CON TAPPO PER GAS ACCIAIO

INSPECTION ELEMENT W/ PLUG FOR GASES, STEEL



CODICE	Ø	€
DPISPG080	80/130	147,74
DPISPG100	100/150	158,69
DPISPG130	130/180	186,05
DPISPG150	150/200	202,46
DPISPG180	180/230	235,30
DPISPG200	200/250	268,13
DPISPG250	250/300	295,49
DPISPG300	300/350	344,74
DPISPG350	350/400	437,76
DPISPG400	400/450	492,48
DPISPG450	450/500	622,44
DPISPG500	500/550	834,48

ELEMENTO ISPEZIONE CON TAPPO PER SOLIDI ACCIAIO

INSPECTION ELEMENT W/ PLUG FOR SOLIDS, STEEL



CODICE	Ø	€
DPISPS080	80/130	161,42
DPISPS100	100/150	172,37
DPISPS130	130/180	199,73
DPISPS150	150/200	216,14
DPISPS180	180/230	248,98
DPISPS200	200/250	281,81
DPISPS250	250/300	309,17
DPISPS300	300/350	358,42
DPISPS350	350/400	451,44
DPISPS400	400/450	506,16
DPISPS450	450/500	636,12
DPISPS500	500/550	848,16

ELEMENTO ISPEZIONE CON TAPPO PER GAS RAME

INSPECTION ELEMENT W/ PLUG FOR GASES, COPPER



CODICE	Ø	€
DRISPG080	80/130	200,07
DRISPG100	100/150	214,89
DRISPG130	130/180	251,94
DRISPG150	150/200	274,17
DRISPG180	180/230	318,63
DRISPG200	200/250	363,09
DRISPG250	250/300	400,14
DRISPG300	300/350	466,83
DRISPG350	350/400	592,80
DRISPG400	400/450	666,90
DRISPG450	450/500	844,74
DRISPG500	500/550	1126,32

ELEMENTO ISPEZIONE CON TAPPO PER SOLIDI RAME

INSPECTION ELEMENT W/ PLUG FOR SOLIDS, COPPER



CODICE	Ø	€
DRISPS080	80/130	214,89
DRISPS100	100/150	229,71
DRISPS130	130/180	266,76
DRISPS150	150/200	288,99
DRISPS180	180/230	333,45
DRISPS200	200/250	377,91
DRISPS250	250/300	414,96
DRISPS300	300/350	481,65
DRISPS350	350/400	607,62
DRISPS400	400/450	681,72
DRISPS450	450/500	859,56
DRISPS500	500/550	1141,14

DOPPIA PARETE ISOLATA 25 mm

25 MM INSULATED *DOUBLE-WALL*



RACCORDO "T" 90°+ ISP. SUL RETRO
PER GAS ACCIAIO
90° TEE PIECE + REAR GAS INSPECTION DOOR, STEEL

CODICE	Ø	€
DPT9IG080	80/130	253,08
DPT9IG100	100/150	268,08
DPT9IG130	130/180	295,49
DPT9IG150	150/200	322,85
DPT9IG180	180/230	426,82
DPT9IG200	200/250	459,65
DPT9IG250	250/300	506,16
DPT9IG300	300/350	588,24



RACCORDO "T" 90° + ISP. SUL RETRO
PER SOLIDI ACCIAIO
90° TEE PIECE + REAR SOLIDS INSPECTION DOOR, STEEL

CODICE	Ø	€
DPT9IS080	80/130	253,08
DPT9IS100	100/150	268,08
DPT9IS130	130/180	295,49
DPT9IS150	150/200	322,85
DPT9IS180	180/230	426,82
DPT9IS200	200/250	459,65
DPT9IS250	250/300	506,16
DPT9IS300	300/350	588,24



RACCORDO "T" 90° + ISP. SUL RETRO
PER GAS RAME
90° TEE PIECE + REAR GAS INSPECTION DOOR, COPPER

CODICE	Ø	€
DRT9IG080	80/130	343,82
DRT9IG100	100/150	364,57
DRT9IG130	130/180	400,14
DRT9IG150	150/200	437,19
DRT9IG180	180/230	577,98
DRT9IG200	200/250	622,44
DRT9IG250	250/300	681,72
DRT9IG300	300/350	794,35



RACCORDO "T" 90° + ISP. SUL RETRO
PER SOLIDI RAME
90° TEE PIECE + REAR SOLIDS INSPECTION DOOR, COPPER

CODICE	Ø	€
DRT9IS080	80/130	358,54
DRT9IS100	100/150	379,39
DRT9IS130	130/180	414,96
DRT9IS150	150/200	452,01
DRT9IS180	180/230	592,80
DRT9IS200	200/250	637,26
DRT9IS250	250/300	696,54
DRT9IS300	300/350	809,17

DOPPIA PARETE ISOLATA 25 mm

25 MM INSULATED *DOUBLE-WALL*

TAPPO PER ISPEZIONE
CON GUARNIZIONE ACCIAIO
INSPECTION PLUG WITH GASKET, STEEL



CODICE	Ø	€
MPTAIG080	80	21,89
MPTAIG100	100	24,62
MPTAIG120	120	30,10
MPTAIG130	130	31,46
MPTAIG140	140	34,20
MPTAIG150	150	35,57
MPTAIG160	160	43,78
MPTAIG180	180	46,51
MPTAIG200	200	54,72
MPTAIG250	250	76,61
MPTAIG300	300	101,23

TAPPO ISPEZIONE PER COMBUSTIBILI
SOLIDI ACCIAIO

SOLID FUELS INSPECTION PLUG, STEEL



CODICE	Ø	€
MPTAIS080	80	38,30
MPTAIS100	100	39,67
MPTAIS120	120	43,78
MPTAIS130	130	45,14
MPTAIS140	140	46,51
MPTAIS150	150	50,62
MPTAIS160	160	53,35
MPTAIS180	180	57,46
MPTAIS200	200	64,30
MPTAIS250	250	84,82
MPTAIS300	300	103,97

TAPPO PER ISPEZIONE
CON GUARNIZIONE RAME
INSPECTION PLUG WITH GASKET, COPPER



CODICE	Ø	€
MRTAIG080	80	38,53
MRTAIG100	100	41,50
MRTAIG120	120	47,42
MRTAIG130	130	48,91
MRTAIG140	140	51,87
MRTAIG150	150	53,35
MRTAIG160	160	62,24
MRTAIG180	180	65,21
MRTAIG200	200	81,51
MRTAIG250	250	103,74
MRTAIG300	300	133,38

TAPPO ISPEZIONE PER COMBUSTIBILI
SOLIDI RAME

SOLID FUELS INSPECTION PLUG, COPPER



CODICE	Ø	€
MRTAIS080	80	51,98
MRTAIS100	100	53,35
MRTAIS120	120	57,46
MRTAIS130	130	58,82
MRTAIS140	140	60,19
MRTAIS150	150	64,30
MRTAIS160	160	67,03
MRTAIS180	180	71,14
MRTAIS200	200	82,08
MRTAIS250	250	102,60
MRTAIS300	300	123,12

DOPPIA PARETE ISOLATA 25 mm

25 MM INSULATED *DOUBLE-WALL*

ELEMENTO DI ISPEZIONE RACCOLTA INCOMBUSTI ACCIAIO

INSPECTION ELEMENT FOR UNBURNED MATERIALS, STEEL



CODICE	Ø	€
DPINCO080	80/130	294,12
DPINCO100	100/150	300,96
DPINCO130	130/180	376,20
DPINCO150	150/200	383,04
DPINCO180	180/230	396,72
DPINCO200	200/250	403,56
DPINCO250	250/300	430,92
DPINCO300	300/350	506,16
DPINCO350	350/400	567,72
DPINCO400	400/450	649,80
DPINCO450	450/500	861,84
DPINCO500	500/550	1299,60



GUARNIZIONE FIBRA DI VETRO

GLASS FIBER GASKET

CODICE	€/metro
MPGFV700	5,47

ELEMENTO DI ISPEZIONE RACCOLTA INCOMBUSTI RAME

INSPECTION ELEMENT FOR UNBURNED MATERIALS, COPPER



CODICE	Ø	€
DRINCO080	80/130	400,14
DRINCO100	100/150	407,55
DRINCO130	130/180	511,29
DRINCO150	150/200	518,70
DRINCO180	180/230	540,93
DRINCO200	200/250	548,34
DRINCO250	250/300	585,39
DRINCO300	300/350	689,13
DRINCO350	350/400	815,10
DRINCO400	400/450	926,25
DRINCO450	450/500	1222,65
DRINCO500	500/550	1852,50



SIFONE SCARICO CONDENSA CASSETTA DA INCASSO

CONDENSATE DRAIN SIPHON / RECESSED BOX

CODICE	€
PPSIFONE	54,72
PPCASSIF	47,88

DOPPIA PARETE ISOLATA 25 mm

25 MM INSULATED *DOUBLE-WALL*

TAPPO CON SCARICO CONDENSA ACCIAIO

CONDENSATE DRAIN CAP, STEEL



CODICE	Ø	€
DPTASP080	80/130	47,88
DPTASP100	100/150	54,72
DPTASP130	130/180	68,40
DPTASP150	150/200	75,24
DPTASP180	180/230	82,08
DPTASP200	200/250	88,92
DPTASP250	250/300	109,44
DPTASP300	300/350	136,80
DPTASP350	350/400	205,20
DPTASP400	400/450	232,56
DPTASP450	450/500	246,24
DPTASP500	500/550	287,28

> DADO CIECO 3/4" 3,00



TAPPO CIECO CON MANIGLIA ACCIAIO

BLIND CAP WITH HANDLE, STEEL

CODICE	Ø	€
DPTAMA080	80/130	54,72
DPTAMA100	100/150	68,40
DPTAMA130	130/180	73,87
DPTAMA150	150/200	76,61
DPTAMA180	180/230	82,08
DPTAMA200	200/250	88,92
DPTAMA250	250/300	109,44
DPTAMA300	300/350	136,80
DPTAMA350	350/400	205,20
DPTAMA400	400/450	232,56
DPTAMA450	450/500	246,24
DPTAMA500	500/550	287,28

TAPPO CON SCARICO CONDENSA RAME

CONDENSATE DRAIN CAP, COPPER



CODICE	Ø	€
DRTASP080	80/130	81,51
DRTASP100	100/150	88,92
DRTASP130	130/180	96,33
DRTASP150	150/200	111,15
DRTASP180	180/230	118,56
DRTASP200	200/250	125,97
DRTASP250	250/300	163,02
DRTASP300	300/350	192,66
DRTASP350	350/400	281,58
DRTASP400	400/450	318,63
DRTASP450	450/500	333,45
DRTASP500	500/550	392,73



TAPPO CIECO CON MANIGLIA RAME

BLIND CAP WITH HANDLE, COPPER

CODICE	Ø	€
DRTAMA080	80/130	85,96
DRTAMA100	100/150	93,37
DRTAMA130	130/180	106,70
DRTAMA150	150/200	117,08
DRTAMA180	180/230	124,49
DRTAMA200	200/250	133,38
DRTAMA250	250/300	170,43
DRTAMA300	300/350	200,07
DRTAMA350	350/400	281,58
DRTAMA400	400/450	318,63
DRTAMA450	450/500	333,45
DRTAMA500	500/550	392,73

DOPPIA PARETE ISOLATA 25 mm

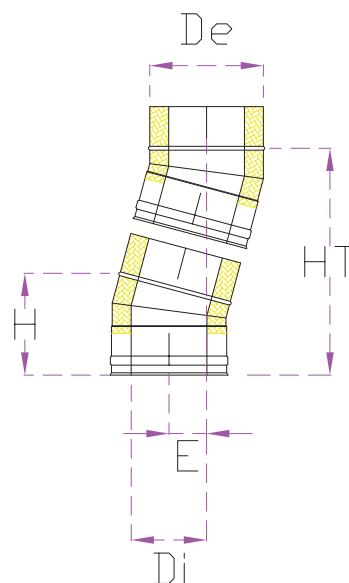
25 MM INSULATED *DOUBLE-WALL*

CURVA A 15° ACCIAIO

15° BEND, STEEL



CODICE	Ø	€
DPG15F080	80/130	84,82
DPG15F100	100/150	90,29
DPG15F130	130/180	117,65
DPG15F150	150/200	120,38
DPG15F180	180/230	123,12
DPG15F200	200/250	136,80
DPG15F250	250/300	158,69
DPG15F300	300/350	177,84
DPG15F350	350/400	246,24
DPG15F400	400/450	259,92
DPG15F450	450/500	335,16
DPG15F500	500/550	403,56



Di	De	H	E	HT
80	130	110	29	221
100	150	113	30	226
130	180	120	32	228
150	200	123	32	243
180	230	125	32	246
200	250	130	34	259
250	300	130	34	260
300	350	142	37	284
350	400	157	41	311
400	450	224	59	447
450	500	230	60	459
500	550	235	62	473

CURVA A 15° RAME

15° BEND, COPPER



CODICE	Ø	€
DRG15F080	80/130	118,56
DRG15F100	100/150	125,97
DRG15F130	130/180	163,02
DRG15F150	150/200	170,43
DRG15F180	180/230	177,84
DRG15F200	200/250	185,25
DRG15F250	250/300	214,89
DRG15F300	300/350	244,53
DRG15F350	350/400	333,45
DRG15F400	400/450	355,68
DRG15F450	450/500	459,42
DRG15F500	500/550	548,34

SPOSTAMENTO DI ASSE CON CURVE 15° CON ELEMENTO L.250mm - L.325mm - L.500mm - L.750mm - L.1000mm

AXIS SHIFTING WITH 15° BEND + ELEMENT L 250 mm - L 325 mm - L 500 mm - L 750 mm - L 1000 mm

Ø	2 x 15° CON L. 250	2 x 15° CON L. 325	2 x 15° CON L. 500	2 x 15° CON L. 750	2 x 15° CON L. 1000
80	80,0	100,0	145,0	210,0	275,0
100	80,0	100,0	145,0	210,0	275,0
130	82,0	102,0	147,0	212,0	278,0
150	82,0	102,0	147,0	212,0	278,0
180	82,0	102,0	147,0	212,0	278,0
200	84,0	104,0	149,0	214,0	280,0
250	85,0	104,0	150,0	214,0	280,0
300	87,0	107,0	152,0	217,0	283,0
350	91,0	111,0	156,0	221,0	286,0
400	110,0	129,0	174,0	239,0	303,0
450	111,0	130,0	175,0	240,0	305,0
500	112,0	132,0	177,0	242,0	307,0

DOPPIA PARETE ISOLATA 25 mm

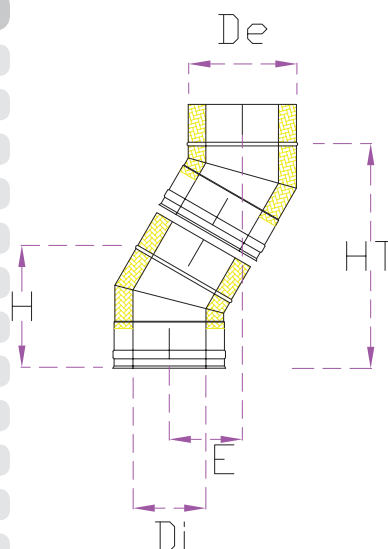
25 MM INSULATED *DOUBLE-WALL*

CURVA A 30° ACCIAIO

30° BEND, STEEL



CODICE	Ø	€
DPG30F080	80/130	76,61
DPG30F100	100/150	82,08
DPG30F130	130/180	106,70
DPG30F150	150/200	117,65
DPG30F180	180/230	128,59
DPG30F200	200/250	139,54
DPG30F250	250/300	164,16
DPG30F300	300/350	207,94
DPG30F350	350/400	246,24
DPG30F400	400/450	266,76
DPG30F450	450/500	348,84
DPG30F500	500/550	451,44



Di	De	H	E	HT
80	130	119	62	231
100	150	130	68	253
130	180	135	71	264
150	200	140	73	272
180	230	147	77	285
200	250	156	81	303
250	300	171	90	334
300	350	182	95	356
350	400	198	105	390
400	450	215	113	423
450	500	234	124	471
500	550	298	157	586

CURVA A 30° RAME

CURVA A 30° RAME



CODICE	Ø	€
DRG30F080	80/130	103,74
DRG30F100	100/150	111,15
DRG30F130	130/180	148,20
DRG30F150	150/200	163,02
DRG30F180	180/230	177,84
DRG30F200	200/250	192,66
DRG30F250	250/300	222,30
DRG30F300	300/350	281,58
DRG30F350	350/400	333,45
DRG30F400	400/450	363,09
DRG30F450	450/500	474,24
DRG30F500	500/550	615,03

SPOSTAMENTO DI ASSE CON CURVE 30° CON ELEMENTO L.250mm - L.325mm - L.500mm - L.750mm - L.1000mm

AXIS SHIFTING WITH 30° BEND + ELEMENT L 250 mm - L 325 mm - L 500 mm - L 750 mm - L 1000 mm

Ø	2 x 30° CON L. 250	2 x 30° CON L. 325	2 x 30° CON L. 500	2 x 30° CON L. 750	2 x 30° CON L. 1000
80	159,5	197,0	284,5	409,5	534,5
100	165,5	203,0	290,5	415,5	540,5
130	168,5	206,0	293,5	418,5	543,5
150	170,5	208,0	295,5	420,5	545,5
180	174,5	212,0	299,5	424,5	549,5
200	178,5	216,0	303,5	428,5	553,5
250	187,5	225,0	312,5	437,5	562,5
300	192,5	230,0	317,5	442,5	567,5
350	202,5	240,0	327,5	452,5	577,5
400	210,5	248,0	335,5	460,5	585,5
450	221,5	259,0	346,5	471,5	596,5
500	254,5	292,0	379,5	504,5	629,5

DOPPIA PARETE ISOLATA 25 mm

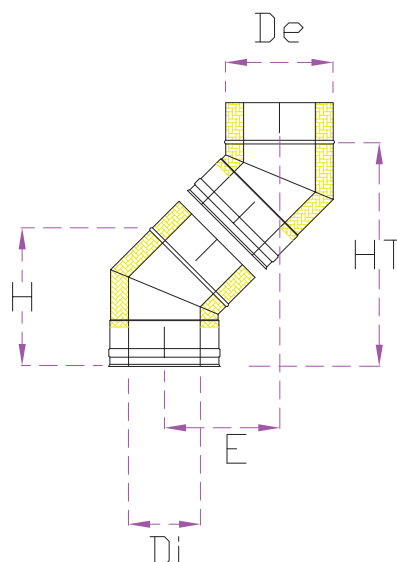
25 MM INSULATED DOUBLE-WALL

CURVA A 45° ACCIAIO

45° BEND, STEEL



CODICE	Ø	€
76,61	80/130	63,84
82,08	100/150	68,40
106,70	130/180	88,92
117,65	150/200	98,04
128,59	180/230	107,16
139,54	200/250	116,28
164,16	250/300	136,80
207,94	300/350	173,28
246,24	350/400	205,20
266,76	400/450	222,30
348,84	450/500	290,70
451,44	500/550	376,20



Di	De	H	E	HT
80	130	133	103	249
100	150	138	108	260
130	180	155	120	290
150	200	156	122	293
180	230	191	152	365
200	250	175	140	335
250	300	196	156	376
300	350	212	170	409
350	400	235	188	453
400	450	262	212	511
450	500	273	220	528
500	550	346	280	673

CURVA A 45° RAME

45° BEND, COPPER



CODICE	Ø	€
DRG45F080	80/130	103,74
DRG45F100	100/150	111,15
DRG45F130	130/180	148,20
DRG45F150	150/200	163,02
DRG45F180	180/230	177,84
DRG45F200	200/250	192,66
DRG45F250	250/300	222,30
DRG45F300	300/350	281,58
DRG45F350	350/400	333,45
DRG45F400	400/450	363,09
DRG45F450	450/500	474,24
DRG45F500	500/550	615,03

SPOSTAMENTO DI ASSE CON CURVE 45° CON ELEMENTO L.250mm - L.325mm - L.500mm - L.750mm - L.1000mm

AXIS SHIFTING WITH 45° BEND + ELEMENT L 250 mm - L 325 mm - L 500 mm - L 750 mm - L 1000 mm

Ø	2 x 45° CON L. 250	2 x 45° CON L. 325	2 x 45° CON L. 500	2 x 45° CON L. 750	2 x 45° CON L. 1000
80	241,0	294,0	417,7	594,5	771,0
100	246,0	299,0	422,7	599,5	776,0
130	258,0	311,0	434,7	611,5	788,0
150	260,0	313,0	436,7	613,5	790,0
180	290,0	343,0	466,7	643,5	820,0
200	277,0	331,0	453,7	630,5	807,0
250	294,0	347,0	470,7	647,5	824,0
300	308,0	361,0	484,7	661,5	838,0
350	326,0	379,0	502,7	679,5	856,0
400	350,0	403,0	526,7	703,5	880,0
450	358,0	411,0	534,7	711,5	888,0
500	418,0	471,0	594,7	771,5	948,0

DOPPIA PARETE ISOLATA 25 mm

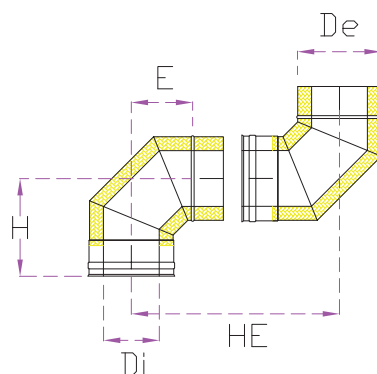
25 MM INSULATED *DOUBLE-WALL*

CURVA A 90° ACCIAIO

90° BEND, STEEL



CODICE	Ø	€
DPG90F080	80/130	123,12
DPG90F100	100/150	136,80
DPG90F130	130/180	180,58
DPG90F150	150/200	196,99
DPG90F180	180/230	218,88
DPG90F200	200/250	240,77
DPG90F250	250/300	279,07
DPG90F300	300/350	347,47
DPG90F350	350/400	410,40
DPG90F400	400/450	458,28
DPG90F450	450/500	581,40
DPG90F500	500/550	759,24



Di	De	E	H	HE
80	130	102	178	280
100	150	110	175	285
130	180	126	186	312
150	200	135	200	335
180	230	145	210	355
200	250	150	215	365
250	300	185	252	437
300	350	215	275	490
350	400	248	327	575
400	450	273	355	628
450	500	326	380	706
500	550	391	446	837

CURVA A 90° RAME

90° BEND, COPPER



CODICE	Ø	€
DRG90F080	80/130	170,43
DRG90F100	100/150	185,25
DRG90F130	130/180	244,53
DRG90F150	150/200	266,76
DRG90F180	180/230	296,40
DRG90F200	200/250	326,04
DRG90F250	250/300	377,91
DRG90F300	300/350	474,24
DRG90F350	350/400	555,75
DRG90F400	400/450	622,44
DRG90F450	450/500	792,87
DRG90F500	500/550	1037,40

SPOSTAMENTO DI ASSE CON CURVE 90° CON ELEMENTO L.250mm - L.325mm - L.500mm - L.750mm - L.1000mm

AXIS SHIFTING WITH 90° BEND + ELEMENT L 250 mm - L 325 mm - L 500 mm - L 750 mm - L 1000 mm

Ø	2 x 90° CON L. 250	2 x 90° CON L. 325	2 x 90° CON L. 500	2 x 90° CON L. 750	2 x 90° CON L. 1000
80	475,0	550,0	775,0	975,0	1225,0
100	480,0	555,0	780,0	980,0	1230,0
130	507,0	582,0	757,0	1007,0	1257,0
150	530,0	605,0	780,0	1030,0	1280,0
180	550,0	625,0	800,0	1050,0	1300,0
200	560,0	635,0	810,0	1060,0	1310,0
250	632,0	707,0	882,0	1132,0	1382,0
300	685,0	760,0	935,0	1185,0	1435,0
350	770,0	845,0	1020,0	1270,0	1520,0
400	823,0	898,0	1073,0	1323,0	1573,0
450	901,0	976,0	1151,0	1401,0	1651,0
500	1032,0	1107,0	1282,0	1532,0	1782,0

DOPPIA PARETE ISOLATA 25 mm

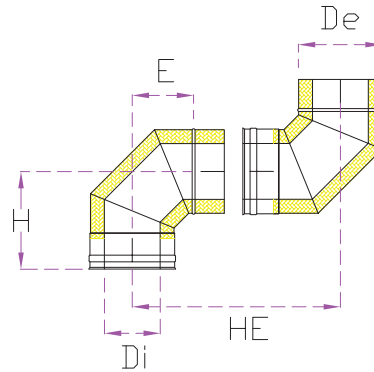
25 MM INSULATED DOUBLE-WALL

CURVA A 90° CON ISPEZIONE ACCIAIO

INSPECTION 90° BEND, STEEL



CODICE	Ø	€
DPG90I080	80/130	234,00
DPG90I100	100/150	260,00
DPG90I130	130/180	338,00
DPG90I150	150/200	370,50
DPG90I180	180/230	409,50
DPG90I200	200/250	455,00
DPG90I250	250/300	526,50
DPG90I300	300/350	652,60



Di	De	E	H	HE
80	130	102	178	280
100	150	110	175	285
130	180	126	186	312
150	200	135	200	335
180	230	145	210	355
200	250	150	215	365
250	300	185	252	437
300	350	215	275	490

CURVA A 90° CON ISPEZIONE RAME

INSPECTION 90° BEND, COPPER



CODICE	Ø	€
DRG90I080	80/130	338,58
DRG90I100	100/150	389,88
DRG90I130	130/180	458,28
DRG90I150	150/200	525,31
DRG90I180	180/230	596,45
DRG90I200	200/250	673,06
DRG90I250	250/300	755,14
DRG90I300	300/350	908,35

SPOSTAMENTO DI ASSE CON CURVE 90° CON ELEMENTO L.250mm - L.325mm - L.500mm - L.750mm - L.1000mm

AXIS SHIFTING WITH 90° BEND + ELEMENT L 250 mm - L 325 mm - L 500 mm - L 750 mm - L 1000 mm

Ø	2 x 90° CON L. 250	2 x 90° CON L. 325	2 x 90° CON L. 500	2 x 90° CON L. 750	2 x 90° CON L. 1000
80	475,0	550,0	775,0	975,0	1225,0
100	480,0	555,0	780,0	980,0	1230,0
130	507,0	582,0	757,0	1007,0	1257,0
150	530,0	605,0	780,0	1030,0	1280,0
180	550,0	625,0	800,0	1050,0	1300,0
200	560,0	635,0	810,0	1060,0	1310,0
250	632,0	707,0	882,0	1132,0	1382,0
300	685,0	760,0	935,0	1185,0	1435,0

DOPPIA PARETE ISOLATA 25 mm

25 MM INSULATED *DOUBLE-WALL*

> NEW

PIASTRA DI SUPPORTO INTERMEDIA ACCIAIO

INTERMEDIATE SUPPORT PLATE, STEEL

CODICE	Ø	€
DPSSOL080	80/130	90,29
DPSSOL100	100/150	95,76
DPSSOL130	130/180	112,18
DPSSOL150	150/200	123,12
DPSSOL180	180/230	153,22
DPSSOL200	200/250	186,05
DPSSOL250	250/300	207,94
DPSSOL300	300/350	224,35
DPSSOL350	350/400	266,76
DPSSOL400	400/450	444,60
DPSSOL450	450/500	506,16
DPSSOL500	500/550	588,24



> NEW

COPPIA DI ALETTE PER PIASTRA SUPPORTO ACCIAIO

PAIR OF TABS FOR SUPPORT PLATE, STEEL

CODICE	Ø	€
DPALETTE080	80/130	57,46
DPALETTE100	100/150	62,93
DPALETTE130	130/180	69,77
DPALETTE150	150/200	76,61
DPALETTE180	180/230	98,50
DPALETTE200	200/250	103,97
DPALETTE250	250/300	114,91
DPALETTE300	300/350	164,16
DPALETTE350	350/400	177,84
DPALETTE400	400/450	205,20
DPALETTE450	450/500	218,88
DPALETTE500	500/550	246,24



> NEW

PIASTRA DI SUPPORTO INTERMEDIA RAME

INTERMEDIATE SUPPORT PLATE, COPPER

CODICE	Ø	€
DRSSOL080	80/130	123,01
DRSSOL100	100/150	130,42
DRSSOL130	130/180	152,65
DRSSOL150	150/200	167,47
DRSSOL180	180/230	207,48
DRSSOL200	200/250	251,94
DRSSOL250	250/300	281,58
DRSSOL300	300/350	303,81
DRSSOL350	350/400	363,09
DRSSOL400	400/450	603,17
DRSSOL450	450/500	686,17
DRSSOL500	500/550	797,32



> NEW

COPPIA DI ALETTE PER PIASTRA SUPPORTO RAME

PAIR OF TABS FOR SUPPORT PLATE, COPPER

CODICE	Ø	€
DRALETTE080	80/130	81,51
DRALETTE100	100/150	88,92
DRALETTE130	130/180	96,33
DRALETTE150	150/200	103,74
DRALETTE180	180/230	133,38
DRALETTE200	200/250	148,20
DRALETTE250	250/300	163,02
DRALETTE300	300/350	222,30
DRALETTE350	350/400	244,53
DRALETTE400	400/450	296,40
DRALETTE450	450/500	311,22
DRALETTE500	500/550	355,68



DOPPIA PARETE ISOLATA 25 mm

25 MM INSULATED *DOUBLE-WALL*

**NEW
PATENT**



SUPPORTO MURALE "GHOST" ACCIAIO

"GHOST" SUPPORT STEEL

CODICE	Ø	€
DPGH080	80/130	147,74
DPGH100	100/150	158,69
DPGH130	130/180	181,94
DPGH150	150/200	199,73
DPGH180	180/230	251,71
DPGH200	200/250	290,02
DPGH250	250/300	322,85
DPGH300	300/350	388,51

COPPIA PROLUNGHE PER SUPPORTO MURALE "GHOST" ACCIAIO

PAIR OF "GHOST" SUPPORT EXTENSIONS, STEEL

CODICE	L	€
DPIIF054002	80 mm	50,00



PIASTRA DI SUPPORTO MP/DP ACCIAIO

SW/DW SUPPORT PLATE, STEEL

CODICE	Ø	€
DPSOLM080	80/130	87,55
DPSOLM100	100/150	93,02
DPSOLM130	130/180	109,44
DPSOLM150	150/200	120,38
DPSOLM180	180/230	147,74
DPSOLM200	200/250	180,58
DPSOLM250	250/300	202,46
DPSOLM300	300/350	218,88

**NEW
PATENT**



SUPPORTO MURALE "GHOST" RAMATO

"GHOST" SUPPORT AUBURN

CODICE	Ø	€
DRGH080	80/130	237,12
DRGH100	100/150	266,76
DRGH130	130/180	296,40
DRGH150	150/200	326,04
DRGH180	180/230	414,96
DRGH200	200/250	474,24
DRGH250	250/300	533,52
DRGH300	300/350	637,26

COPPIA PROLUNGHE PER SUPPORTO MURALE "GHOST" RAMATO

PAIR OF "GHOST" SUPPORT EXTENSIONS, AUBURN

CODICE	L	€
DPIRF054002	80 mm	80,00



PIASTRA DI SUPPORTO MP/DP RAME

SW/DW SUPPORT PLATE, COPPER

CODICE	Ø	€
DRSOLM080	80/130	118,56
DRSOLM100	100/150	125,97
DRSOLM130	130/180	148,20
DRSOLM150	150/200	163,02
DRSOLM180	180/230	200,07
DRSOLM200	200/250	244,53
DRSOLM250	250/300	274,17
DRSOLM300	300/350	296,40

DOPPIA PARETE ISOLATA 25 mm

25 MM INSULATED *DOUBLE-WALL*

BASE A TERRA CON SCARICO CONDENSA LATERALE ACCIAIO

FLOOR BASE W/ SIDE CONDENSATE DRAIN, STEEL



CODICE	Ø	€
DPBASE080	80/130	103,97
DPBASE100	100/150	114,91
DPBASE130	130/180	125,86
DPBASE150	150/200	136,80
DPBASE180	180/230	164,16
DPBASE200	200/250	207,94
DPBASE250	250/300	235,30
DPBASE300	300/350	257,18
DPBASE350	350/400	287,28
DPBASE400	400/450	348,84
DPBASE450	450/500	403,56
DPBASE500	500/550	451,44



> NEW

BASE A TERRA CON SCARICO PER CONDENSAZIONE ACCIAIO

FLOOR BASE STEEL - CONDENSATION

CODICE	Ø	€
DPBASET080	80/130	120,38
DPBASET100	100/150	131,33
DPBASET130	130/180	150,48
DPBASET150	150/200	166,90
DPBASET180	180/230	183,31
DPBASET200	200/250	196,99
DPBASET250	250/300	229,82
DPBASET300	300/350	259,92

BASE A TERRA CON SCARICO CONDENSA LATERALE RAME

FLOOR BASE W/ SIDE CONDENSATE DRAIN, COPPER



CODICE	Ø	€
DRBASE080	80/130	140,79
DRBASE100	100/150	155,61
DRBASE130	130/180	170,43
DRBASE150	150/200	185,25
DRBASE180	180/230	222,30
DRBASE200	200/250	281,58
DRBASE250	250/300	318,63
DRBASE300	300/350	348,27
DRBASE350	350/400	392,73
DRBASE400	400/450	474,24
DRBASE450	450/500	548,34
DRBASE500	500/550	615,03



> NEW

BASE A TERRA CON SCARICO PER CONDENSAZIONE RAME

FLOOR BASE COPPER - CONDENSATION

CODICE	Ø	€
DRBASET080	80/130	220,79
DRBASET100	100/150	237,38
DRBASET130	130/180	283,76
DRBASET150	150/200	305,19
DRBASET180	180/230	348,61
DRBASET200	200/250	369,62
DRBASET250	250/300	430,82
DRBASET300	300/350	435,76

DOPPIA PARETE ISOLATA 25 mm

25 MM INSULATED *DOUBLE-WALL*

AUMENTO DI SEZIONE DOPPIA/DOPPIA ACCIAIO

DW/DW INCREASER, STEEL



CODICE	Ø	€
DPAUSE080	*...x80	98,50
DPAUSE100	*...x100	98,50
DPAUSE130	*...x130	103,97
DPAUSE150	*...x150	114,91
DPAUSE180	*...x180	125,86
DPAUSE200	*...x200	136,80
DPAUSE250	*...x250	153,22
DPAUSE300	*...x300	169,63
DPAUSE350	*...x350	191,52
DPAUSE400	*...x400	218,88
DPAUSE450	*...x450	259,92
DPAUSE500	*...x500	328,32

* In fase di ordine specificare il Ø minore ridotto
* When ordering specify the reduced minor Ø

RIDUZIONE DI SEZIONE DOPPIA/DOPPIA ACCIAIO

DW/DW REDUCER, STEEL



CODICE	Ø	€
-	-	-
DPRIDE100	100x...*	98,50
DPRIDE130	130x...*	103,97
DPRIDE150	150x...*	114,91
DPRIDE180	180x...*	125,86
DPRIDE200	200x...*	136,80
DPRIDE250	250x...*	153,22
DPRIDE300	300x...*	169,63
DPRIDE350	350x...*	191,52
DPRIDE400	400x...*	218,88
DPRIDE450	450x...*	259,92
DPRIDE500	500x...*	328,32

* In fase di ordine specificare il Ø minore ridotto
* When ordering specify the reduced minor Ø

AUMENTO DI SEZIONE DOPPIA/DOPPIA RAME

DW/DW INCREASER, COPPER



CODICE	Ø	€
-	-	-
DRAUSE100	*...x100	133,38
DRAUSE130	*...x130	140,79
DRAUSE150	*...x150	155,61
DRAUSE180	*...x180	170,43
DRAUSE200	*...x200	192,66
DRAUSE250	*...x250	214,89
DRAUSE300	*...x300	237,12
DRAUSE350	*...x350	259,35
DRAUSE400	*...x400	296,40
DRAUSE450	*...x450	355,68
DRAUSE500	*...x500	444,60

* In fase di ordine specificare il Ø minore ridotto
* When ordering specify the reduced minor Ø

RIDUZIONE DI SEZIONE DOPPIA/DOPPIA RAME

DW/DW REDUCER, COPPER



CODICE	Ø	€
-	-	-
DRRIDE100	100x...*	133,38
DRRIDE130	130x...*	140,79
DRRIDE150	150x...*	155,61
DRRIDE180	180x...*	170,43
DRRIDE200	200x...*	192,66
DRRIDE250	250x...*	214,89
DRRIDE300	300x...*	237,12
DRRIDE350	350x...*	259,35
DRRIDE400	400x...*	296,40
DRRIDE450	450x...*	355,68
DRRIDE500	500x...*	444,60

* In fase di ordine specificare il Ø minore ridotto
* When ordering specify the reduced minor Ø

DOPPIA PARETE ISOLATA 25 mm

25 MM INSULATED *DOUBLE-WALL*

RACCORDO MONO/DOPPIA ACCIAIO

SINGLE TO DOUBLE WALL ADAPTER, STEEL



CODICE	Ø	€
DPRMDP080	80/130	65,66
DPRMDP100	100/150	73,87
DPRMDP130	130/180	82,08
DPRMDP150	150/200	84,82
DPRMDP180	180/230	93,02
DPRMDP200	200/250	103,97
DPRMDP250	250/300	131,33
DPRMDP300	300/350	142,27
DPRMDP350	350/400	164,16
DPRMDP400	400/450	198,36
DPRMDP450	450/500	212,04
DPRMDP500	500/550	259,92

RACCORDO CALDAIA ACCIAIO

BOILER ADAPTER, STEEL



CODICE	Ø	€
DPRCDP080	80/130	65,66
DPRCDP100	100/150	73,87
DPRCDP130	130/180	82,08
DPRCDP150	150/200	84,82
DPRCDP180	180/230	93,02
DPRCDP200	200/250	103,97
DPRCDP250	250/300	131,33
DPRCDP300	300/350	142,27
DPRCDP350	350/400	164,16
DPRCDP400	400/450	198,36
DPRCDP450	450/500	212,04
DPRCDP500	500/550	259,92

RACCORDO MONO/DOPPIA RAME

SINGLE TO DOUBLE WALL ADAPTER, COPPER



CODICE	Ø	€
DRRMDR080	80/130	88,92
DRRMDR100	100/150	103,74
DRRMDR130	130/180	111,15
DRRMDR150	150/200	118,56
DRRMDR180	180/230	125,97
DRRMDR200	200/250	140,79
DRRMDR250	250/300	177,84
DRRMDR300	300/350	192,66
DRRMDR350	350/400	222,30
DRRMDR400	400/450	266,76
DRRMDR450	450/500	288,99
DRRMDR500	500/550	355,68

RACCORDO CALDAIA RAME

BOILER ADAPTER, COPPER



CODICE	Ø	€
DRRCDR080	80/130	88,92
DRRCDR100	100/150	103,74
DRRCDR130	130/180	111,15
DRRCDR150	150/200	118,56
DRRCDR180	180/230	125,97
DRRCDR200	200/250	140,79
DRRCDR250	250/300	177,84
DRRCDR300	300/350	192,66
DRRCDR350	350/400	222,30
DRRCDR400	400/450	266,76
DRRCDR450	450/500	288,99
DRRCDR500	500/550	355,68

DOPPIA PARETE ISOLATA 25 mm

25 MM INSULATED *DOUBLE-WALL*

RACCORDO DOPPIA/MONO ACCIAIO

DOUBLE TO SINGLE WALL ADAPTER, STEEL



CODICE	Ø	€
DPRDPM080	80/130	65,66
DPRDPM100	100/150	73,87
DPRDPM130	130/180	82,08
DPRDPM150	150/200	84,82
DPRDPM180	180/230	93,02
DPRDPM200	200/250	103,97
DPRDPM250	250/300	131,33
DPRDPM300	300/350	142,27
DPRDPM350	350/400	164,16
DPRDPM400	400/450	198,36
DPRDPM450	450/500	212,04
DPRDPM500	500/550	259,92



RACCORDO CALDAIA RIDOTTO FEMMINA ACCIAIO*

FEMALE REDUCING BOILER ADAPTER, STEEL*

CODICE	Ø	€
-	-	-
DPRCFR100	100/150	93,02
DPRCFR130	130/180	102,60
DPRCFR150	150/200	106,70
DPRCFR180	180/230	116,28
DPRCFR200	200/250	129,96
DPRCFR250	250/300	164,16
DPRCFR300	300/350	177,84
DPRCFR350	350/400	205,20
DPRCFR400	400/450	246,24
DPRCFR450	450/500	266,76
DPRCFR500	500/550	328,32

* Specificare Ø Femmina ridotto

* Specify Ø Reduced female

RACCORDO DOPPIA/MONO RAME

DOUBLE TO SINGLE WALL ADAPTER, COPPER



CODICE	Ø	€
DRRDRM080	80/130	88,92
DRRDRM100	100/150	103,74
DRRDRM130	130/180	111,15
DRRDRM150	150/200	118,56
DRRDRM180	180/230	125,97
DRRDRM200	200/250	140,79
DRRDRM250	250/300	177,84
DRRDRM300	300/350	192,66
DRRDRM350	350/400	222,30
DRRDRM400	400/450	266,76
DRRDRM450	450/500	288,99
DRRDRM500	500/550	355,68



RACCORDO CALDAIA RIDOTTO FEMMINA RAME*

FEMALE REDUCING BOILER ADAPTER, COPPER*

CODICE	Ø	€
-	-	-
DRRCFR100	100/150	130,42
DRRCFR130	130/180	139,31
DRRCFR150	150/200	148,20
DRRCFR180	180/230	158,57
DRRCFR200	200/250	176,36
DRRCFR250	250/300	222,30
DRRCFR300	300/350	241,57
DRRCFR350	350/450	281,58
DRRCFR400	400/450	333,45
DRRCFR450	450/500	363,09
DRRCFR500	500/600	444,60

* Specificare Ø Femmina ridotto

* Specify Ø Reduced female

DOPPIA PARETE ISOLATA 25 mm

25 MM INSULATED *DOUBLE-WALL*

TERMINALE ANTIVENTO ACCIAIO

WINDPROOF CAP, STEEL



CODICE	Ø	€
DPBOTT080	80/130	109,44
DPBOTT100	100/150	120,38
DPBOTT130	130/180	136,80
DPBOTT150	150/200	153,22
DPBOTT180	180/230	171,00
DPBOTT200	200/250	186,05
DPBOTT250	250/300	212,04
DPBOTT300	300/350	232,56
DPBOTT350	350/400	294,12
DPBOTT400	400/450	588,24
DPBOTT450	450/500	731,88
DPBOTT500	500/550	882,36

TERMINALE PARAPIOGGIA ACCIAIO

RAIN CAP, STEEL



CODICE	Ø	€
DPPARA080	80/130	68,40
DPPARA100	100/150	75,24
DPPARA130	130/180	87,55
DPPARA150	150/200	93,02
DPPARA180	180/230	103,97
DPPARA200	200/250	106,70
DPPARA250	250/300	136,80
DPPARA300	300/350	177,84
DPPARA350	350/400	205,20
DPPARA400	400/450	294,12
DPPARA450	450/500	362,52
DPPARA500	500/550	465,12

TERMINALE ANTIVENTO RAME

WINDPROOF CAP, COPPER



CODICE	Ø	€
DRBOTT080	80/130	148,20
DRBOTT100	100/150	163,02
DRBOTT130	130/180	192,66
DRBOTT150	150/200	207,48
DRBOTT180	180/230	237,12
DRBOTT200	200/250	266,76
DRBOTT250	250/300	303,81
DRBOTT300	300/350	340,86
DRBOTT350	350/400	400,14
DRBOTT400	400/450	800,28
DRBOTT450	450/500	992,94
DRBOTT500	500/550	1200,42

TERMINALE PARAPIOGGIA RAME

RAIN CAP, COPPER



CODICE	Ø	€
DRPARA080	80/130	93,37
DRPARA100	100/150	102,26
DRPARA130	130/180	118,56
DRPARA150	150/200	125,97
DRPARA180	180/230	140,79
DRPARA200	200/250	145,24
DRPARA250	250/300	185,25
DRPARA300	300/350	244,53
DRPARA350	350/400	281,58
DRPARA400	400/450	400,14
DRPARA450	450/500	489,06
DRPARA500	500/550	629,85

DOPPIA PARETE ISOLATA 25 mm

25 MM INSULATED *DOUBLE-WALL*

TERMINALE TRONCO DI CONO ACCIAIO

TRUNCATED CONE CAP, STEEL



CODICE	Ø	€
DPCONO080	80/130	84,82
DPCONO100	100/150	87,55
DPCONO130	130/180	95,76
DPCONO150	150/200	105,34
DPCONO180	180/230	125,86
DPCONO200	200/250	142,27
DPCONO250	250/300	157,32
DPCONO300	300/350	184,68
DPCONO350	350/400	205,20
DPCONO400	400/450	239,40
DPCONO450	450/500	300,96
DPCONO500	500/550	355,68

TERMINALE CONO ROVESCIO ACCIAIO

INVERTED CONE CAP, STEEL



CODICE	Ø	€
DPCONV080	80/130	150,48
DPCONV100	100/150	164,16
DPCONV130	130/180	184,68
DPCONV150	150/200	205,20
DPCONV180	180/230	212,04
DPCONV200	200/250	232,56
DPCONV250	250/300	259,92
DPCONV300	300/350	273,60
DPCONV350	350/400	335,16
DPCONV400	400/450	608,76
DPCONV450	450/500	663,48
DPCONV500	500/550	718,20

TERMINALE TRONCO DI CONO RAME

TRUNCATED CONE CAP, COPPER



CODICE	Ø	€
DRCONO080	80/130	111,15
DRCONO100	100/150	121,52
DRCONO130	130/180	125,97
DRCONO150	150/200	133,38
DRCONO180	180/230	140,79
DRCONO200	200/250	148,20
DRCONO250	250/300	170,43
DRCONO300	300/350	192,66
DRCONO350	350/400	222,30
DRCONO400	400/450	251,94
DRCONO450	450/500	296,40
DRCONO500	500/550	333,45

TERMINALE CONO ROVESCIO RAME

INVERTED CONE CAP, COPPER



CODICE	Ø	€
DRCONV080	80/130	207,48
DRCONV100	100/150	222,30
DRCONV130	130/180	251,94
DRCONV150	150/200	281,58
DRCONV180	180/230	288,99
DRCONV200	200/250	318,63
DRCONV250	250/300	355,68
DRCONV300	300/350	370,50
DRCONV350	350/400	459,42
DRCONV400	400/450	829,92
DRCONV450	450/500	904,02
DRCONV500	500/550	978,12

DOPPIA PARETE ISOLATA 25 mm

25 MM INSULATED *DOUBLE-WALL*



TERMINALE A ELEMENTI ACCIAIO

MULTIPLE-ELEMENT CAP, STEEL

CODICE	Ø	€
DPITAL080	80/130	150,48
DPITAL100	100/150	157,32
DPITAL130	130/180	164,16
DPITAL150	150/200	177,84
DPITAL180	180/230	198,36
DPITAL200	200/250	239,40
DPITAL250	250/300	287,28
DPITAL300	300/350	294,12
DPITAL350	350/400	342,00
DPITAL400	400/450	396,72
DPITAL450	450/500	451,44
DPITAL500	500/550	478,80



TERMINALE LAMELLARE ACCIAIO

LAMELLAR CAP, STEEL

CODICE	Ø	€
DPEURO080	80/130	69,77
DPEURO100	100/150	80,71
DPEURO130	130/180	91,66
DPEURO150	150/200	105,34
DPEURO180	180/230	142,27
DPEURO200	200/250	149,11
DPEURO250	250/300	203,83
DPEURO300	300/350	274,97



TERMINALE A ELEMENTI RAME

MULTIPLE-ELEMENT CAP, COPPER

CODICE	Ø	€
DRITAL080	80/130	214,89
DRITAL100	100/150	222,30
DRITAL130	130/180	237,12
DRITAL150	150/200	251,94
DRITAL180	180/230	281,58
DRITAL200	200/250	340,86
DRITAL250	250/300	377,91
DRITAL300	300/350	392,73
DRITAL350	350/400	474,24
DRITAL400	400/450	533,52
DRITAL450	450/500	615,03
DRITAL500	500/550	652,08



TERMINALE LAMELLARE RAME

LAMELLAR CAP, COPPER

CODICE	Ø	€
DREURO080	80/130	121,52
DREURO100	100/150	146,72
DREURO130	130/180	185,25
DREURO150	150/200	197,11
DREURO180	180/230	288,99
DREURO200	200/250	305,29
DREURO250	250/300	397,18
DREURO300	300/350	566,12

DOPPIA PARETE ISOLATA 25 mm

25 MM INSULATED *DOUBLE-WALL*

> NEW

TERMINALE SAVA
ACCIAIO
SAVA CAP, STEEL



CODICE	Ø	€
DPBOTS080	80/130	82,08
DPBOTS100	100/150	93,02
DPBOTS130	130/180	103,97
DPBOTS150	150/200	120,38
DPBOTS180	180/230	128,59
DPBOTS200	200/250	142,27
DPBOTS250	250/300	158,69
DPBOTS300	300/350	191,52

> NEW

TERMINALE DESE
ACCIAIO
DESE CAP, STEEL



CODICE	Ø	€
DPBOTD080	80/130	116,28
DPBOTD100	100/150	129,96
DPBOTD130	130/180	150,48
DPBOTD150	150/200	171,00
DPBOTD180	180/230	205,20
DPBOTD200	200/250	212,04
DPBOTD250	250/300	232,56
DPBOTD300	300/350	300,96

> NEW

TERMINALE SAVA
RAME
SAVA CAP, COPPER



CODICE	Ø	€
DRBOTS080	80/130	174,88
DRBOTS100	100/150	192,66
DRBOTS130	130/180	207,48
DRBOTS150	150/200	231,19
DRBOTS180	180/230	251,94
DRBOTS200	200/250	290,47
DRBOTS250	250/300	314,18
DRBOTS300	300/350	385,32

> NEW

TERMINALE DESE
RAME
DESE CAP, COPPER



CODICE	Ø	€
DRBOTD080	80/130	259,35
DRBOTD100	100/150	266,76
DRBOTD130	130/180	326,04
DRBOTD150	150/200	407,55
DRBOTD180	180/230	489,06
DRBOTD200	200/250	533,52
DRBOTD250	250/300	644,67
DRBOTD300	300/350	837,33

DOPPIA PARETE ISOLATA 25 mm

25 MM INSULATED *DOUBLE-WALL*



ASPIRATORE EOLICO/GIREVOLE ACCIAIO

REVOLVING CHIMNEY COWL, STEEL

CODICE	Ø	€
DPEOLO080	80/130	184,68
DPEOLO100	100/150	184,68
DPEOLO130	130/180	191,52
DPEOLO150	150/200	205,20
DPEOLO180	180/230	246,24
DPEOLO200	200/250	259,92
DPEOLO250	250/300	314,64
DPEOLO300	300/350	342,00



TERMINALE DI SCARICO ORIZZONTALE ACCIAIO

HORIZONTAL EXHAUST CAP, STEEL

CODICE	Ø	€
DPDOCA080	80/130	91,68
DPDOCA100	100/150	95,76
DPDOCA130	130/180	99,84
DPDOCA150	150/200	103,92
DPDOCA180	180/230	109,44
DPDOCA200	200/250	123,12
DPDOCA250	250/300	136,80
DPDOCA300	300/350	157,20



ASPIRATORE EOLICO/GIREVOLE RAME

REVOLVING CHIMNEY COWL, COPPER

CODICE	Ø	€
DREOLO080	80/130	251,94
DREOLO100	100/150	251,94
DREOLO130	130/180	303,81
DREOLO150	150/200	311,22
DREOLO180	180/230	377,91
DREOLO200	200/250	392,73
DREOLO250	250/300	481,65
DREOLO300	300/350	533,52



TERMINALE DI SCARICO ORIZZONTALE RAME

HORIZONTAL EXHAUST CAP, COPPER

CODICE	Ø
DRDOCA080	80/130
DRDOCA100	100/150
DRDOCA130	130/180
DRDOCA150	150/200
DRDOCA180	180/230
DRDOCA200	200/250
DRDOCA250	250/300
DRDOCA300	300/350

> NEW

Prezzo a richiesta
Price on request

DOPPIA PARETE ISOLATA 25 mm

25 MM INSULATED *DOUBLE-WALL*

FASCETTA COPRIGIUNTO ACCIAIO

JOINT CLAMP BAND, STEEL



CODICE	Ø	€
DPFGIU080	80/130	9,58
DPFGIU100	100/150	9,99
DPFGIU130	130/180	10,26
DPFGIU150	150/200	10,53
DPFGIU180	180/230	10,94
DPFGIU200	200/250	11,08
DPFGIU250	250/300	11,90
DPFGIU300	300/350	12,72
DPFGIU350	350/400	13,68
DPFGIU400	400/450	14,36
DPFGIU450	450/500	15,87
DPFGIU500	500/550	17,24



FASCETTA CAVI TIRANTI ACCIAIO

GUY WIRE BRACKET, STEEL

CODICE	Ø	€
DPFCTI080	80/130	30,10
DPFCTI100	100/150	32,83
DPFCTI130	130/180	34,20
DPFCTI150	150/200	35,57
DPFCTI180	180/230	36,94
DPFCTI200	200/250	38,30
DPFCTI250	250/300	42,41
DPFCTI300	300/350	54,72
DPFCTI350	350/400	56,09
DPFCTI400	400/450	57,46
DPFCTI450	450/500	61,56
DPFCTI500	500/550	65,66

FASCETTA COPRIGIUNTO RAME

JOINT CLAMP BAND, COPPER



CODICE	Ø	€
DRFGIU080	80/130	13,34
DRFGIU100	100/150	14,08
DRFGIU130	130/180	14,82
DRFGIU150	150/200	15,56
DRFGIU180	180/230	16,30
DRFGIU200	200/250	17,04
DRFGIU250	250/300	17,78
DRFGIU300	300/350	18,53
DRFGIU350	350/400	20,75
DRFGIU400	400/450	22,23
DRFGIU450	450/500	23,71
DRFGIU500	500/550	25,19



FASCETTA CAVI TIRANTI RAME

GUY WIRE BRACKET, COPPER

CODICE	Ø	€
DRFCTI080	80/130	50,39
DRFCTI100	100/150	54,83
DRFCTI130	130/180	56,32
DRFCTI150	150/200	57,80
DRFCTI180	180/230	59,28
DRFCTI200	200/250	60,76
DRFCTI250	250/300	62,24
DRFCTI300	300/350	77,06
DRFCTI350	350/400	78,55
DRFCTI400	400/450	80,03
DRFCTI450	450/500	84,47
DRFCTI500	500/550	88,92

DOPPIA PARETE ISOLATA 25 mm

25 MM INSULATED *DOUBLE-WALL*

STAFFA A MURO FISSA 50 mm ACCIAIO

FIXED WALL BRACKET 50 mm STEEL



CODICE	Ø	€
DPCOLF080	80/130	24,62
DPCOLF100	100/150	27,36
DPCOLF130	130/180	31,46
DPCOLF150	150/200	34,20
DPCOLF180	180/230	38,30
DPCOLF200	200/250	39,67
DPCOLF250	250/300	43,78
DPCOLF300	300/350	56,09
DPCOLF350	350/400	82,08
DPCOLF400	400/450	88,92
DPCOLF450	450/500	123,12
DPCOLF500	500/550	171,00

STAFFA A MURO REGOLABILE 50 mm/80 mm ACCIAIO

ADJUSTABLE WALL BRACKET 50 mm/80 mm STEEL



CODICE	Ø	€
DPCOLR080	80/130	27,36
DPCOLR100	100/150	30,10
DPCOLR130	130/180	34,20
DPCOLR150	150/200	36,94
DPCOLR180	180/230	41,04
DPCOLR200	200/250	42,41
DPCOLR250	250/300	47,88
DPCOLR300	300/350	61,56
DPCOLR350	350/400	95,76
DPCOLR400	400/450	109,44

STAFFA A MURO FISSA 50 mm RAME

FIXED WALL BRACKET 50 mm COPPER



CODICE	Ø	€
DRCOLF080	80/130	41,50
DRCOLF100	100/150	45,94
DRCOLF130	130/180	53,35
DRCOLF150	150/200	56,32
DRCOLF180	180/230	60,76
DRCOLF200	200/250	63,73
DRCOLF250	250/300	71,14
DRCOLF300	300/350	102,26
DRCOLF350	350/400	118,56
DRCOLF400	400/450	125,97
DRCOLF450	450/500	177,84
DRCOLF500	500/550	244,53

STAFFA A MURO REGOLABILE 50 mm/80 mm RAME

ADJUSTABLE WALL BRACKET 50 mm/80 mm COPPER

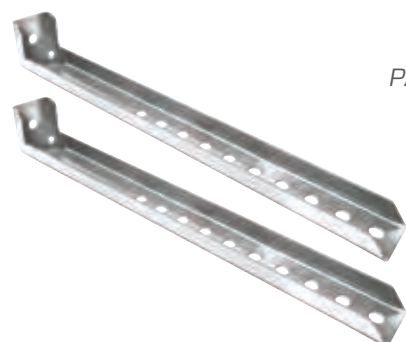


CODICE	Ø	€
DRCOLR080	80/130	51,87
DRCOLR100	100/150	59,28
DRCOLR130	130/180	68,17
DRCOLR150	150/200	77,06
DRCOLR180	180/230	84,47
DRCOLR200	200/250	88,92
DRCOLR250	250/300	99,29
DRCOLR300	300/350	111,15

DOPPIA PARETE ISOLATA 25 mm

25 MM INSULATED *DOUBLE-WALL*

> NEW



COPPIA PROLUNGHE PER
STAFFA MURALE ACCIAIO
PAIR OF WALL BRACKET EXTENSIONS, STEEL

CODICE	L	€
DPPROL300	300mm	34,20
DPPROL400	400mm	41,04



CODICE	L	€
DPPROL200	200mm	12,54

GUARNIZIONE IN SILICONE (MAX 200°C)

SILICONE GASKET (MAX 200 °C)



CODICE	Ø	€
MPGSIL080	80	1,37
MPGSIL100	100	2,19
MPGSIL130	130	3,01
MPGSIL150	150	4,10
MPGSIL180	180	5,75
MPGSIL200	200	6,57
MPGSIL250	250	10,26
MPGSIL300	300	12,04
MPGSIL350	350	19,15
MPGSIL400	400	21,89
* MPGSIL450	450	24,62
* MPGSIL500	500	28,73

* In 2 pezzi

* On 2 pieces

> NEW



COPPIA PROLUNGHE PER
STAFFA MURALE RAME
PAIR OF WALL BRACKET EXTENSIONS, COPPER

CODICE	L	€
DRPROL300	300mm	51,30
DRPROL400	400mm	61,56



CODICE	L	€
DRPROL200	200mm	19,38

> NEW

GUARNIZIONE EPDM 5000 Pa
PER CONDENSAZIONE (MAX 120°C)
EPDM GASKET 5000 Pa FOR CONDENSATION (MAX 120 °C)



CODICE	Ø	€
MPEPDM080	80	1,37
MPEPDM100	100	2,19
MPEPDM130	130	3,01
MPEPDM150	150	4,10
MPEPDM180	180	5,75
MPEPDM200	200	6,57
MPEPDM250	250	10,26
MPEPDM300	300	12,04

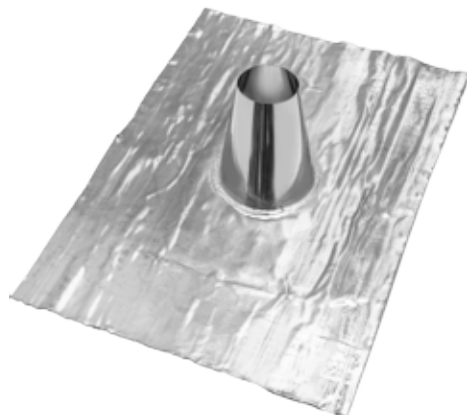
Per l'innesto si consiglia l'uso di scivolante
We recommend using lubricant

DOPPIA PARETE ISOLATA 25 mm

25 MM INSULATED *DOUBLE-WALL*

FALDALE PIANO INOX BASE PIOMBO (1000x700)

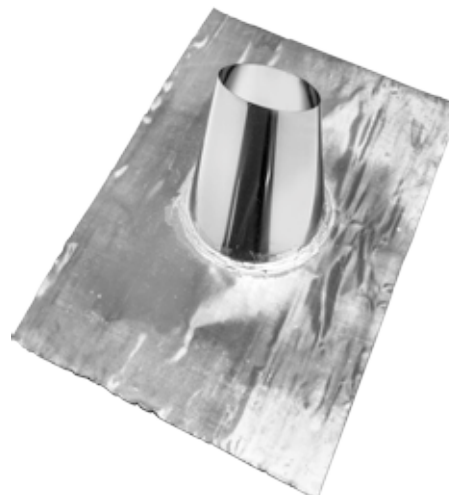
FLAT FLASHING, SS W/ LEAD BASE (1000x700)



CODICE	Ø	€
DPFPBP080	80/130	171,00
DPFPBP100	100/150	171,00
DPFPBP130	130/180	198,36
DPFPBP150	150/200	198,36
DPFPBP180	180/230	225,72
DPFPBP200	200/250	225,72
DPFPBP250	250/300	239,40
DPFPBP300	300/350	259,92
DPFPBP350	350/400	328,32
DPFPBP400	400/450	355,68
DPFPBP450	450/500	369,36
DPFPBP500	500/550	383,04

FALDALE INCLINATO INOX BASE PIOMBO (1000x700)

SLOPED FLASHING, SS W/ LEAD BASE (1000x700)



CODICE	Ø	€
DPFIBP080	80/130	171,00
DPFIBP100	100/150	171,00
DPFIBP130	130/180	198,36
DPFIBP150	150/200	198,36
DPFIBP180	180/230	225,72
DPFIBP200	200/250	225,72
DPFIBP250	250/300	239,40
DPFIBP300	300/350	259,92
DPFIBP350	350/400	328,32
DPFIBP400	400/450	355,68
DPFIBP450	450/500	369,36
DPFIBP500	500/550	383,04

FALDALE PIANO RAME BASE PIOMBO (1000x700)

FLAT FLASHING, COPPER W/ LEAD BASE (1000x700)



CODICE	Ø	€
DRFPBP080	80/130	200,07
DRFPBP100	100/150	200,07
DRFPBP130	130/180	237,12
DRFPBP150	150/200	237,12
DRFPBP180	180/230	266,76
DRFPBP200	200/250	266,76
DRFPBP250	250/300	288,99
DRFPBP300	300/350	326,04
DRFPBP350	350/400	414,96
DRFPBP400	400/450	474,24
DRFPBP450	450/500	496,47
DRFPBP500	500/550	518,70

FALDALE INCLINATO RAME BASE PIOMBO (1000x700)

SLOPED FLASHING, COPPER W/ LEAD BASE (1000x700)



CODICE	Ø	€
DRFIBP080	80/130	200,07
DRFIBP100	100/150	200,07
DRFIBP130	130/180	237,12
DRFIBP150	150/200	237,12
DRFIBP180	180/230	266,76
DRFIBP200	200/250	266,76
DRFIBP250	250/300	288,99
DRFIBP300	300/350	326,04
DRFIBP350	350/400	414,96
DRFIBP400	400/450	474,24
DRFIBP450	450/500	496,47
DRFIBP500	500/550	518,70

DOPPIA PARETE ISOLATA 25 mm

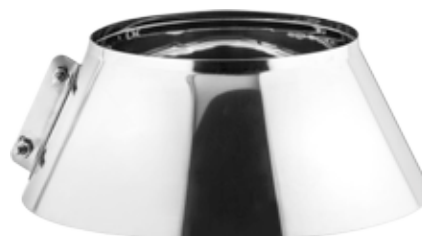
25 MM INSULATED *DOUBLE-WALL*

FALDALE INCLINATO INOX ECONOMICO BASE PIOMBO (500x500)

ECONOMIC SLOPED FLASHING, SS W/ LEAD BASE (500x500)



CODICE	Ø	€
DPFIBPECO080	80/130	102,60
DPFIBPECO100	100/150	102,60
DPFIBPECO130	130/180	116,28
DPFIBPECO150	150/200	116,28
DPFIBPECO180	180/230	129,96
DPFIBPECO200	200/250	129,96



SCOSSALINA PER FALDALE ACCIAIO

STORM COLLAR FOR FLASHING, STEEL

CODICE	Ø	€
DPSCOS080	80/130	35,57
DPSCOS100	100/150	42,41
DPSCOS130	130/180	42,41
DPSCOS150	150/200	56,09
DPSCOS180	180/230	61,56
DPSCOS200	200/250	61,56
DPSCOS250	250/300	64,30
DPSCOS300	300/350	68,40
DPSCOS350	350/400	75,24
DPSCOS400	400/450	82,08
DPSCOS450	450/500	95,76
DPSCOS500	500/550	109,44

SCOSSALINA PER FALDALE RAME

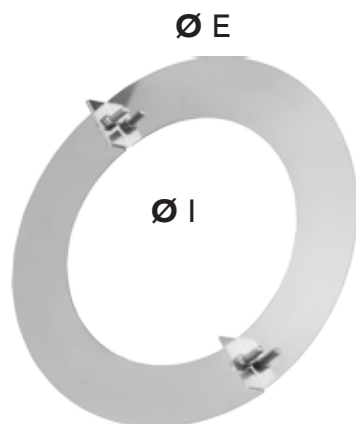
STORM COLLAR FOR FLASHING, COPPER

CODICE	Ø	€
DRSCOS080	80/130	59,28
DRSCOS100	100/150	65,21
DRSCOS130	130/180	85,96
DRSCOS150	150/200	88,92
DRSCOS180	180/230	109,67
DRSCOS200	200/250	112,63
DRSCOS250	250/300	124,49
DRSCOS300	300/350	170,43
DRSCOS350	350/400	177,84
DRSCOS400	400/450	192,66
DRSCOS450	450/500	207,48
DRSCOS500	500/550	222,30



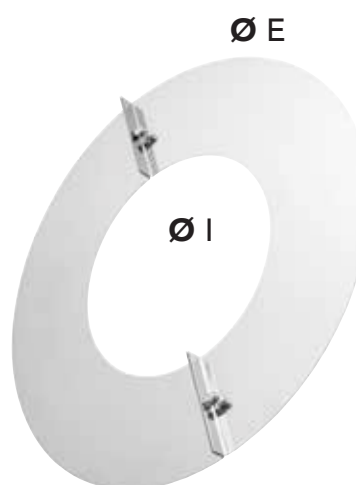
DOPPIA PARETE ISOLATA 25 mm

25 MM INSULATED *DOUBLE-WALL*



ROSONE PIANO DI FINITURA ACCIAIO
FLAT FINISHING ROSETTE, STEEL

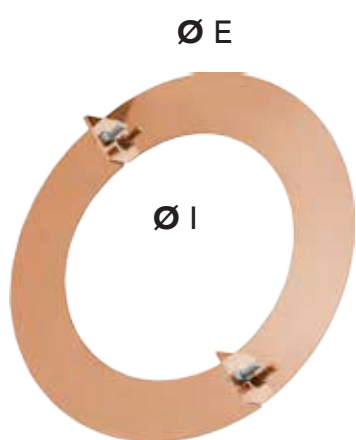
x DP	CODICE	I	Ø E	€
80/130	MPROSF130	130	230	24,62
100/150	MPROSF150	150	250	27,36
130/180	MPROSF180	180	280	28,73
150/200	MPROSF200	200	300	30,10
180/230	MPROSF230	230	330	32,83
200/250	MPROSF250	250	350	35,57
250/300	MPROSF300	300	400	41,04
300/350	MPROSF350	350	450	46,51



ROSONE PIANO DI FINITURA FEMMINA
ACCIAIO

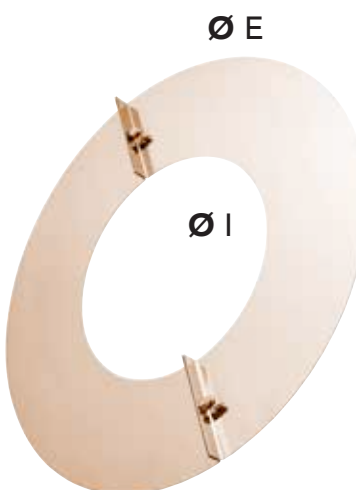
FEMALE FLAT FINISHING ROSETTE, STEEL

x DP	CODICE	I	Ø E	€
80/130	MPROSFF130	135	330	34,20
100/150	MPROSFF150	155	350	41,04
130/180	MPROSFF180	185	380	46,51
150/200	MPROSFF200	205	400	49,25
200/250	MPROSFF250	255	450	65,66
250/300	MPROSFF300	305	500	79,34
300/350	MPROSFF350	355	550	93,02



ROSONE PIANO DI FINITURA RAME
FLAT FINISHING ROSETTE, COPPER

x DP	CODICE	I	Ø E	€
80/130	MRROSF130	130	230	37,05
100/150	MRROSF150	150	250	40,01
130/180	MRROSF180	180	280	40,01
150/200	MRROSF200	200	300	44,46
180/230	MRROSF230	230	330	53,35
200/250	MRROSF250	250	350	63,73
250/300	MRROSF300	300	400	81,51
300/350	MRROSF350	350	450	96,33



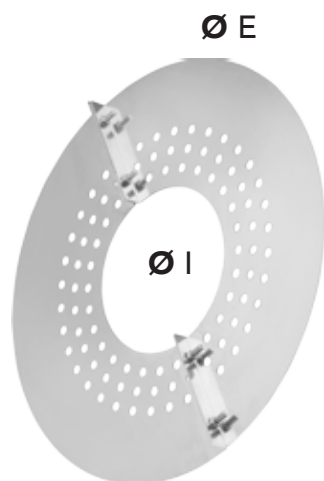
ROSONE PIANO DI FINITURA FEMMINA
RAME

FEMALE FLAT FINISHING ROSETTE, COPPER

x DP	CODICE	I	Ø E	€
80/130	MRROSFF130	135	330	40,01
100/150	MRROSFF150	155	350	47,42
130/180	MRROSFF180	185	380	56,32
150/200	MRROSFF200	205	400	66,69
200/250	MRROSFF250	255	450	80,03
250/300	MRROSFF300	305	500	106,70
300/350	MRROSFF350	355	550	128,93

DOPPIA PARETE ISOLATA 25 mm

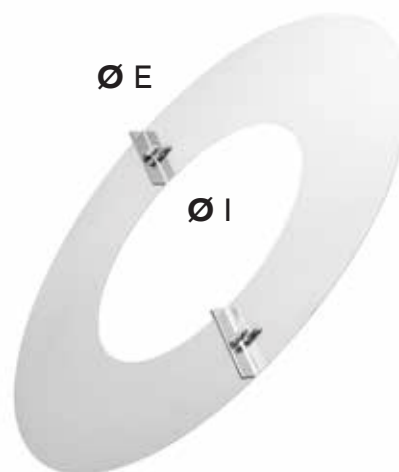
25 MM INSULATED *DOUBLE-WALL*



ROSONE COPRIFORO "VENTILATO"
ACCIAIO

"VENTED" HOLE-COVERING ROSETTE, STEEL

CODICE	I	Ø E	Ø I	€
DPROSV080	130	330		41,04
DPROSV100	150	350		47,88
DPROSV130	180	380		54,72
DPROSV150	200	400		61,56
DPROSV180	230	430		68,40
DPROSV200	250	450		75,24
DPROSV250	300	500		88,92
DPROSV300	350	550		109,44



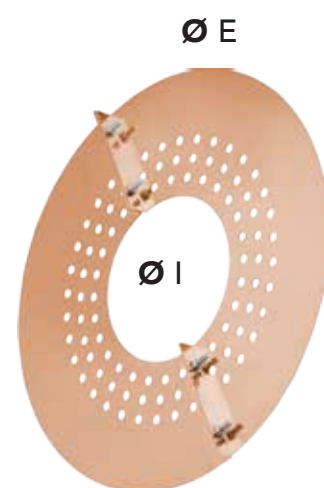
ROSONE INCLINATO DI FINITURA
ACCIAIO*

FEMALE INCLINED FINISHING ROSETTE, STEEL *

x DP	CODICE	I	Ø E	Ø I	€
80/130	MPROSFI130	130	...		123,12
100/150	MPROSFI150	150	...		123,12
130/180	MPROSFI180	180	...		123,12
150/200	MPROSFI200	200	...		123,12
180/230	MPROSFI230	230	...		136,80
200/250	MPROSFI250	250	...		136,80
250/300	MPROSFI300	300	...		136,80
300/350	MPROSFI350	350	...		164,16

* Sull'ordine specificare l'inclinazione

* On the order specify inclination



ROSONE COPRIFORO "VENTILATO"
RAME

"VENTED" HOLE-COVERING ROSETTE, COPPER

CODICE	I	Ø E	Ø I	€
DRROSV080	130	330		88,92
DRROSV100	150	350		103,74
DRROSV130	180	380		118,56
DRROSV150	200	400		133,38
DRROSV180	230	430		148,20
DRROSV200	250	450		163,02
DRROSV250	300	500		192,66
DRROSV300	350	550		237,12



ROSONE INCLINATO DI FINITURA
RAME*

FEMALE INCLINED FINISHING ROSETTE, COPPER *

x DP	CODICE	I	Ø E	Ø I	€
80/130	MRROSVI130	130	...		155,61
100/150	MRROSVI150	150	...		163,02
130/180	MRROSVI180	180	...		177,84
150/200	MRROSVI200	200	...		192,66
180/230	MRROSVI230	230	...		207,48
200/250	MRROSVI250	250	...		207,48
250/300	MRROSVI300	300	...		222,30
300/350	MRROSVI350	350	...		237,12

* Sull'ordine specificare l'inclinazione

* On the order specify inclination

DOPPIA PARETE ISOLATA 25 mm

25 MM INSULATED *DOUBLE-WALL*

> NEW

ROSONE CONICO DI FINITURA ACCIAIO

CONICAL FINISHING ROSETTE, STEEL



x DP	CODICE	€
80/130	MPROSC130	35,57
100/150	MPROSC150	42,41
130/180	MPROSC180	42,41
150/200	MPROSC200	56,09
180/220	MPROSC220	61,56
200/250	MPROSC250	61,56
250/300	MPROSC300	61,56



MODULATORE DI TIRAGGIO

DRAFT REGULATOR

CODICE	Ø	€
PNREG080	80	235,13
PNREG150	150	277,88

> NEW

ROSONE CONICO DI FINITURA RAME

CONICAL FINISHING ROSETTE, COPPER



x DP	CODICE	€
80/130	MRROSC130	58,50
100/150	MRROSC150	62,40
130/180	MRROSC180	67,60
150/200	MRROSC200	83,20
180/230	MRROSC230	91,00
200/250	MRROSC250	109,20
250/300	MRROSC300	114,40

DOPPIA PARETE ISOLATA 25 mm

25 MM INSULATED *DOUBLE-WALL*



Tre G s.r.l.

Tel. 045 5708630

www.tregcannefumarie.it

info@tregcannefumarie.it

magazzino@tregcannefumarie.it

